



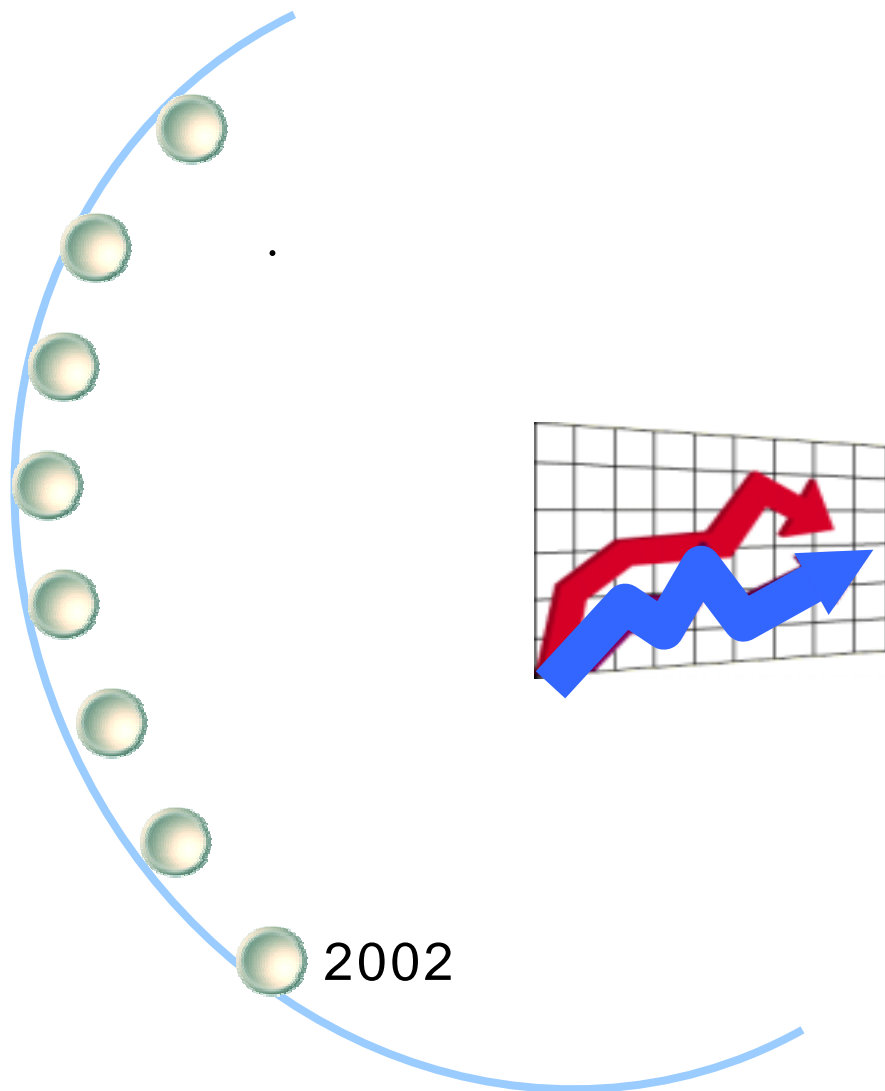
2003년도 세입·세출 결산검사 의견서

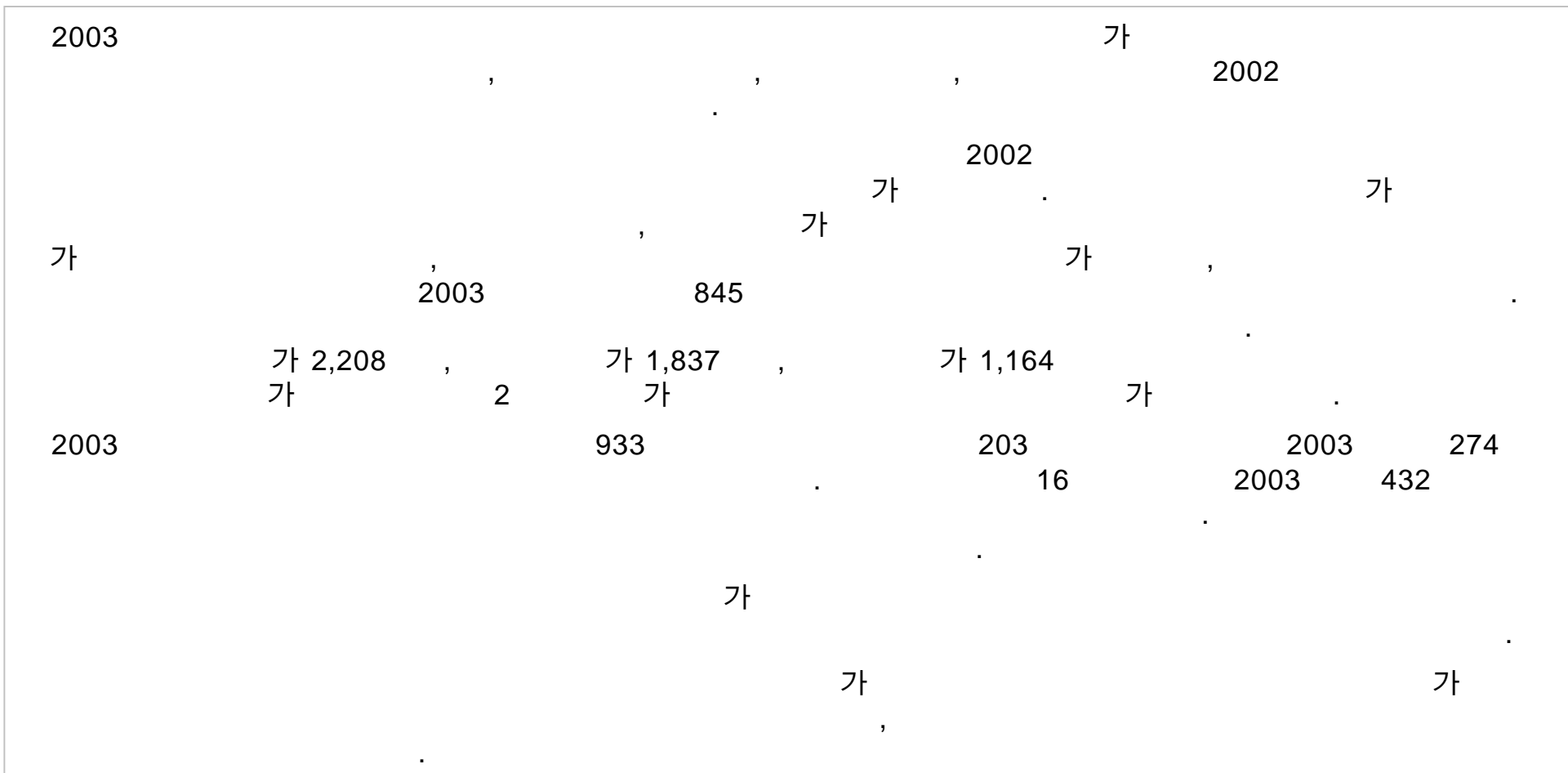
대표위원	김	제	광	
위원	김	중	길	
위원	이	광	양	
위원	나	득	수	
위원	이	상	현	



2004 6 2 ~ 6 21









2003

2002

1. 2003

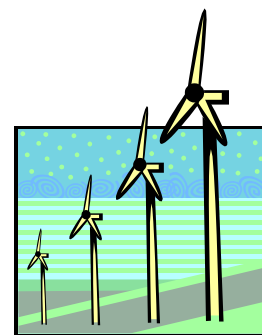
()

□		988,304,842,000	
		1,215,680,067,914	

□		1,141,893,340,840	
	(153,588,498,840)
		665,783,077,700	

□		549,896,990,214	
	42		0 (0 , 0)
		549,896,990,214	

□		52,717,615,520	
	•	8,539,687,440	
	•	186,902,509,830	
	•	1,903,697,900	
	•	299,833,479,524	



2. 2003

□		703,497,642,000			
		851,800,466,883			
□		821,316,897,580			
	(117,819,255,580)		
		536,690,694,530			
□		315,109,772,353			
	42			0 (0 , 0)	
		315,109,772,353			.
□					
	•	36,574,716,780			
	•	4,551,079,830			
	•	146,545,715,810			
	•	1,664,950,000			
	•	125,773,309,933			.

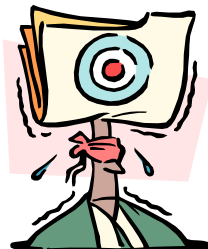


3. 2003

10

가.

□		284,807,200,000	
		363,879,601,031	
□		320,576,443,260	
	(35,769,243,260)
		129,092,383,170	
□		234,787,217,861	
	42		0 (0 , 0)
		234,787,217,861	
□			
	•	16,142,898,740	
	•	3,988,607,610	
	•	40,356,794,020	
	•	238,747,900	
	•	174,060,169,591	



□		158,642,153,000	
		181,639,948,151	
□	(173,895,005,400)
		15,252,852,400	
		27,402,950,900	
□		154,236,997,251	
	42		0 (0 , 0)
		154,236,997,251	
□			
	•	10,044,065,610	
	•	2,951,961,850	
	•	8,850,454,000	
	•	238,747,900	
	•	132,151,767,891	



1)

□ 44,860,000
51,398,462

□ 44,860,000
(0)
16,092,730

□ 35,305,732
0 (0 , 0)
35,305,732

□
• 0
• 0
• 0
• 0
• 35,305,732



2)

<input type="checkbox"/>		1,956,969,000
		1,697,128,553

<input type="checkbox"/>		1,956,969,000	
	(0)
		1,641,482,750	

<input type="checkbox"/>		55,645,803	
	42		0 (0 , 0)
		55,645,803	

<input type="checkbox"/>		
	•	0
	•	0
	•	0
	•	19,029,100
	•	36,616,703



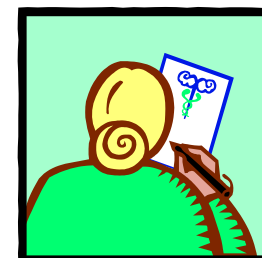
3)

917,000,000
1,099,125,786

917,000,000
(0)
155,008,000

944,117,786
42 0 (0 , 0)
944,117,786

0
• 0
• 0
• 0
• 0
• 944,117,786



4)

358,000,000
493,850,500

358,000,000
(0)
0

493,850,500
42 0 (0 , 0)
493,850,500 .

• 0
• 0
• 0
• 0
• 493,850,500 .



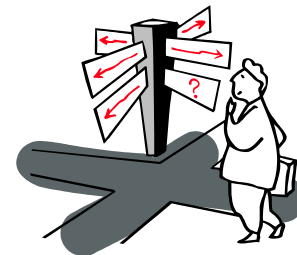
5)

□ 29,399,480,000
33,752,189,559

□ 29,711,026,000
(311,546,000)
1,231,011,420

□ 32,521,178,139
42 0 (0 , 0)
32,521,178,139

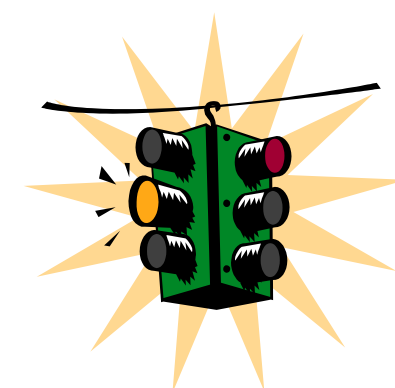
□
• 4,380,687,750
• 0
• 0
• 3,008,970
• 28,137,481,419



6)			
<input type="checkbox"/>		7,966,231,000	
		8,054,387,525	
<input type="checkbox"/>		7,966,231,000	
	(0)
		416,900	
<input type="checkbox"/>		8,053,970,625	
	42		0 (0 , 0)
		8,053,970,625	.
<input type="checkbox"/>			
	•	0	
	•	0	
	•	0	
	•	0	
	•	0	
		8,053,970,625	.



7)			
<input type="checkbox"/>		33,536,613,000	
		52,029,064,326	
<input type="checkbox"/>		48,477,919,400	
	(14,941,306,400)
		24,358,939,100	
<input type="checkbox"/>		27,670,125,226	
	42		0 (0 , 0)
		27,670,125,226	
<input type="checkbox"/>			
	•	5,663,377,860	
	•	2,951,961,850	
	•	8,850,454,000	
	•	216,709,830	
	•	9,987,621,686	



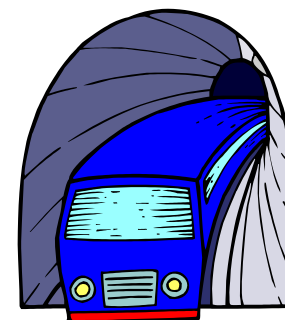
8)

<input type="checkbox"/>		84,463,000,000	
		84,462,803,440	

<input type="checkbox"/>		84,463,000,000	
	(0)
		0	

<input type="checkbox"/>		84,462,803,440	
	42		0 (0 , 0)
		84,462,803,440	

<input type="checkbox"/>			0
	•		0
	•		0
	•		0
	•		0
	•	84,462,803,440	.



2

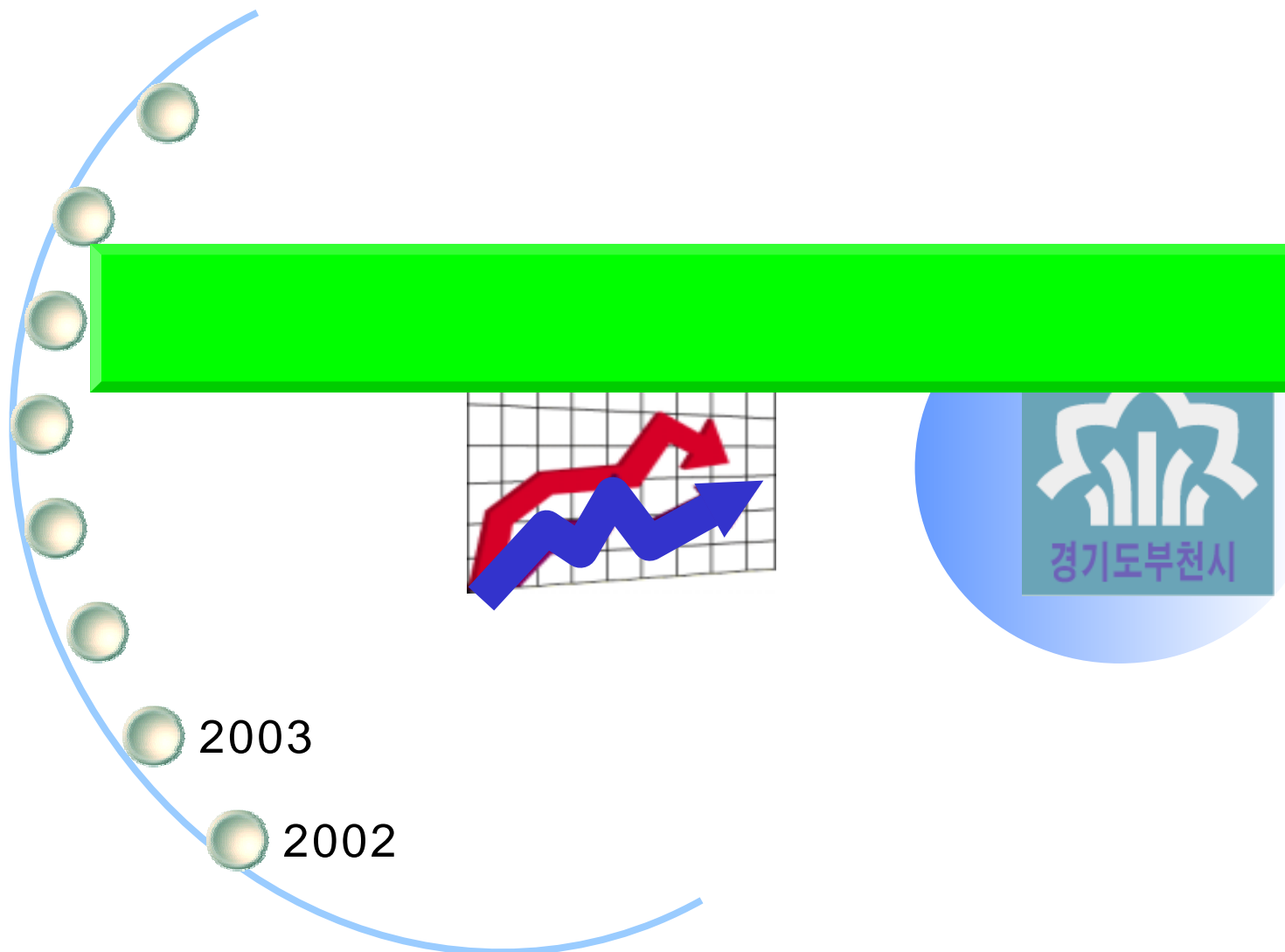
() ,

[1]

(:)

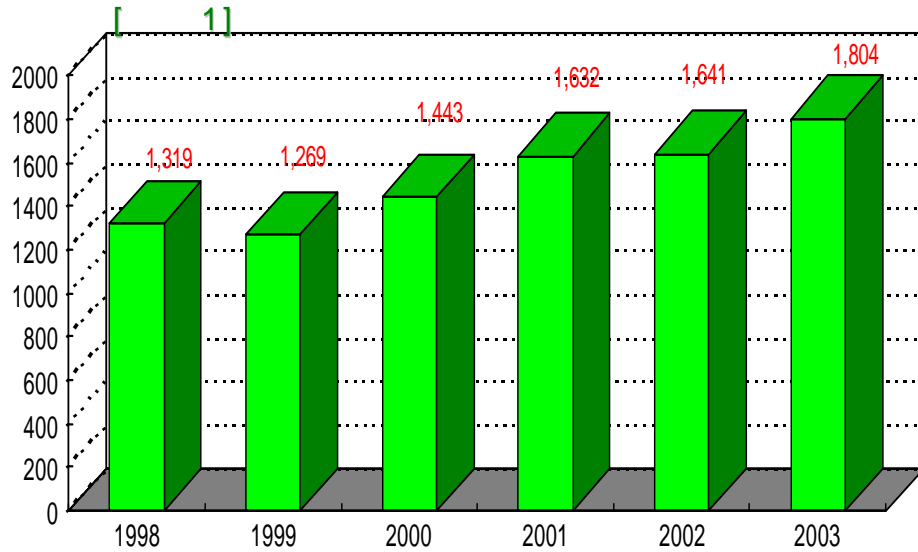
	146,681,437,860	182,239,652,880	101,689,432,270	80,550,220,610	6,098,833,130	1,036,645,760	31,506,340,020
	42,792,928,000	79,947,411,699	39,793,211,820	40,154,199,879	0	509,760,000	0
	103,888,509,860	102,292,241,181	61,896,220,450	40,396,020,731	6,098,833,130	526,885,760	31,506,340,020





2003

2002



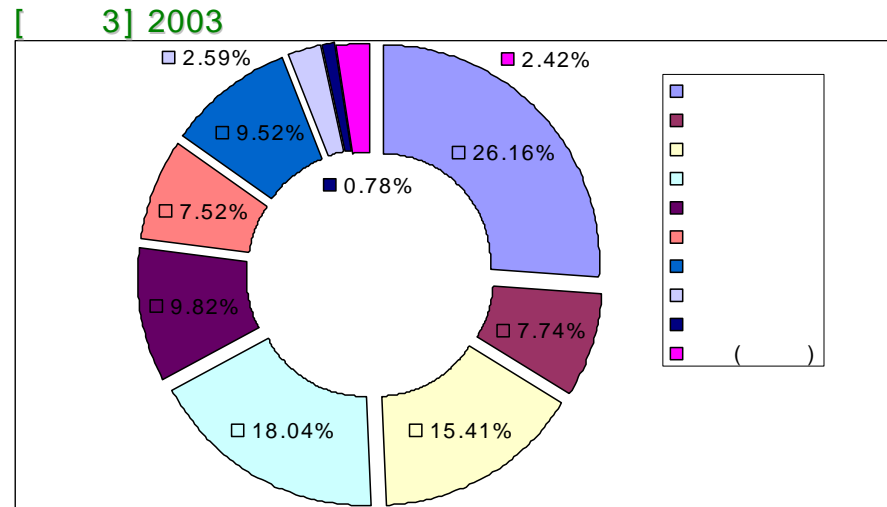
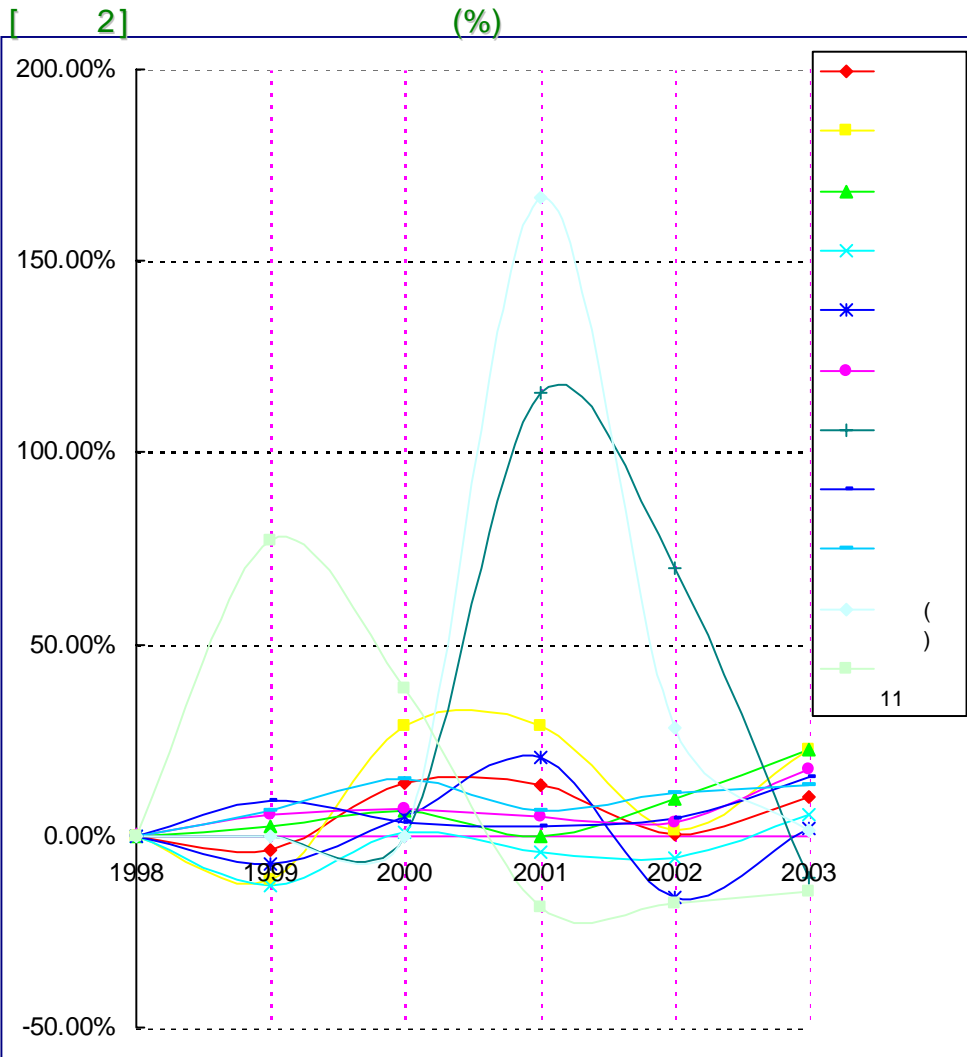
(2000~2003) 가 , 4
 가
 , 2003 1,804
 164 가(10% 가)

[2]

	1998	1999	2000	2001	2002	2003	1998	1999	2000	2001	2002	2003
	1,319	1,269	1,443	1,632	1,641	1,804	0.00%	-3.76%	13.73%	13.10%	0.52%	9.98%
	259	229	295	379	385	472	0.00%	-11.36%	28.48%	28.61%	1.56%	22.59%
	95	98	104	104	114	140	0.00%	2.51%	6.48%	-0.19%	9.79%	22.65%
	333	291	293	280	264	278	0.00%	-12.74%	0.85%	-4.28%	-5.84%	5.32%
	326	302	316	381	319	326	0.00%	-7.53%	4.91%	20.34%	-16.16%	1.97%
	123	130	139	146	151	177	0.00%	5.75%	6.99%	4.95%	3.37%	17.39%
	-	-	42	90	152	136	0.00%	0.00%	0.00%	115.40%	69.68%	-10.96%
	123	134	139	142	149	172	0.00%	9.30%	3.47%	2.46%	4.73%	15.39%
	28	30	35	37	41	47	0.00%	6.62%	14.75%	6.64%	11.06%	13.15%
	-	-	4	11	14	14	0.00%	0.00%	0.00%	166.61%	28.40%	1.30%
()	31	55	77	62	51	44	0.00%	77.22%	38.64%	-18.72%	-17.84%	-14.52%



(%)



26.16%, 18.04%, 15.41%

3 59.61%

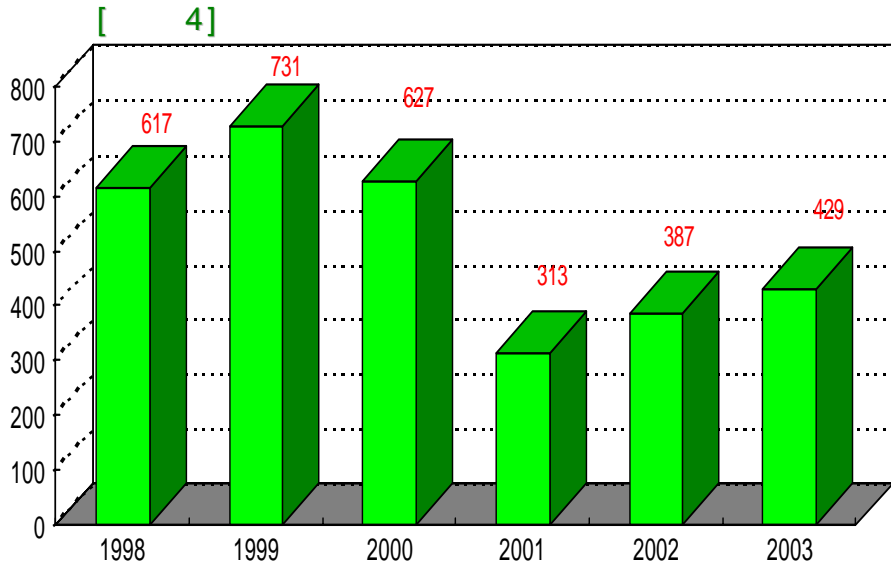
7.52% 9.52%, 7.74%

가 ,

22.59% 가, 22.65% 가,

17.39% 가, 13.15% 가

가 , 가 10.96%



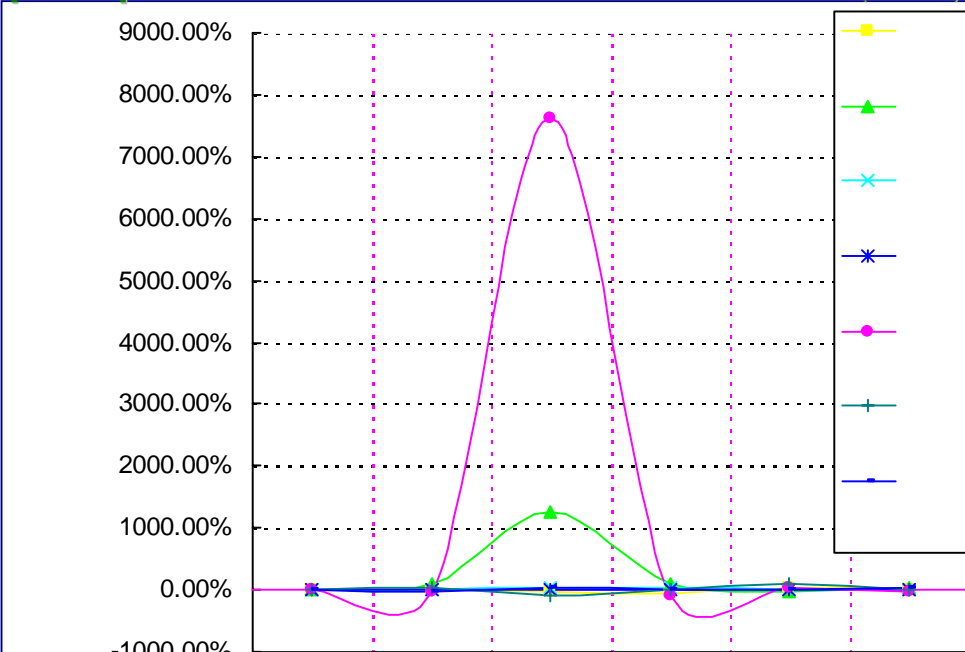
4 (2000~2003) 가

[3]

(:)

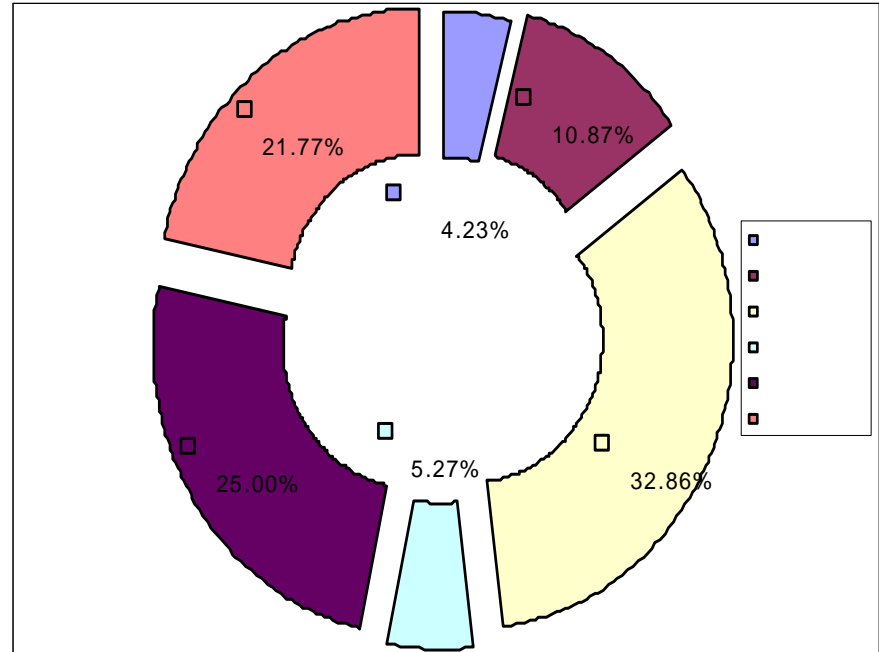
	1998	1999	2000	2001	2002	2003	1998	1999	2000	2001	2002	2003
	617	731	627	313	387	429	0.00%	18.49%	-14.14%	-50.06%	23.52%	10.79%
	0	1	11	20	13	18	0.00%	100.65%	1267.63%	82.25%	-38.30%	44.63%
	21	24	32	40	40	47	0.00%	15.56%	32.71%	22.20%	1.29%	16.12%
	93	101	109	116	131	141	0.00%	8.41%	8.48%	6.42%	12.61%	7.76%
	5	4	346	19	28	23	0.00%	-17.54%	7628.84%	-94.51%	49.31%	-20.43%
	412	548	62	57	105	107	0.00%	33.09%	-88.62%	-9.11%	85.76%	1.85%
	85	53	66	62	70	93	0.00%	-38.39%	25.15%	-6.37%	13.57%	33.48%

[5] (:%)

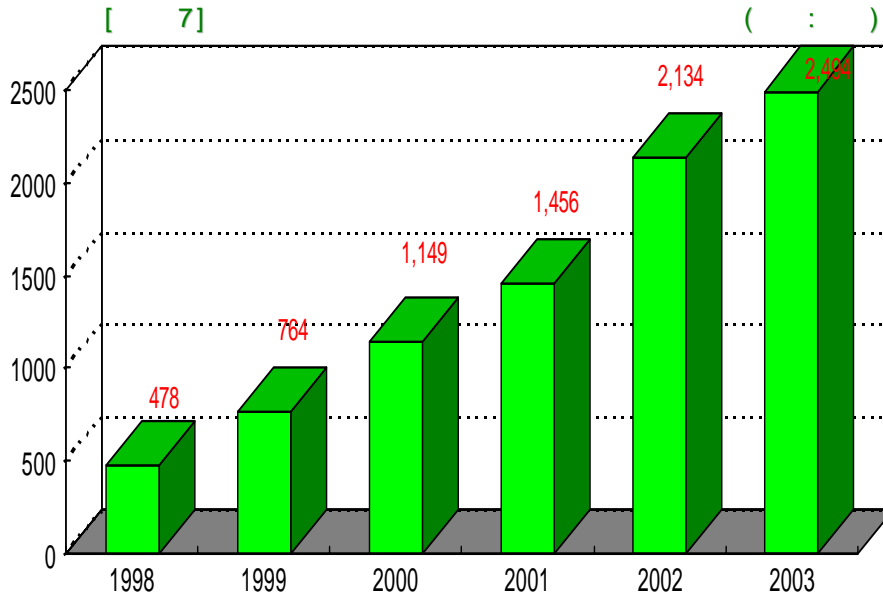


	1998	1999	2000	2001	2002	2003
■	0.00%	18.49%	-14.14%	-50.06%	23.52%	10.79%
▲	0.00%	100.65%	1267.63%	82.25%	-38.30%	44.63%
×	0.00%	15.56%	32.71%	22.20%	1.29%	16.12%
*	0.00%	8.41%	8.48%	6.42%	12.61%	7.76%
●	0.00%	-17.54%	7628.84%	-94.51%	49.31%	-20.43%
+	0.00%	33.09%	-88.62%	-9.11%	85.76%	1.85%
—	0.00%	-38.39%	25.15%	-6.37%	13.57%	33.48%

[6] 2003 (:%)



2003 가
 10 (7.76% 가),
 5 (44.63% 가), 23
 (33.48% 가) 가 5
 (20.43%) 2002
 2003 가 .



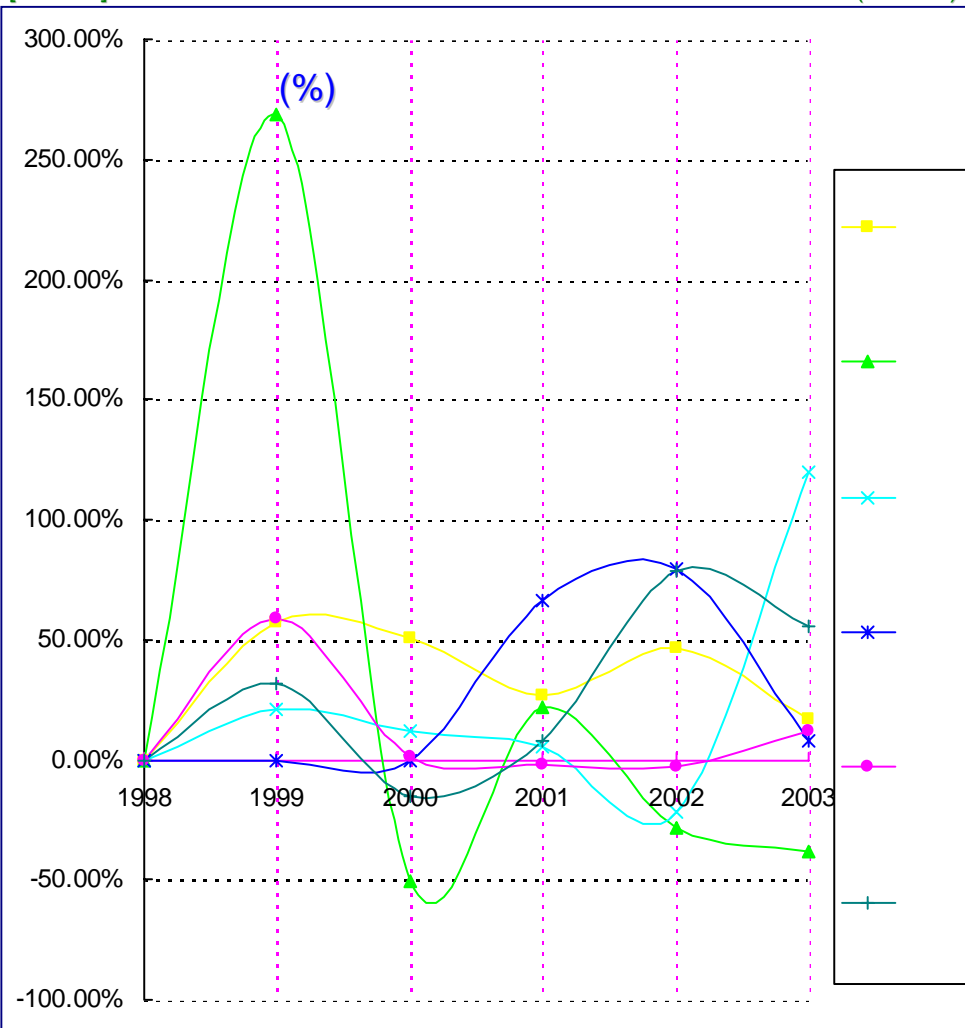
2000	가	가	15%
		13.27%	가
			가
	2003		
	1,410	(12%)	가
		493	(4%),
483	(4%)		
	12		
		21	
38.54%			

[4]

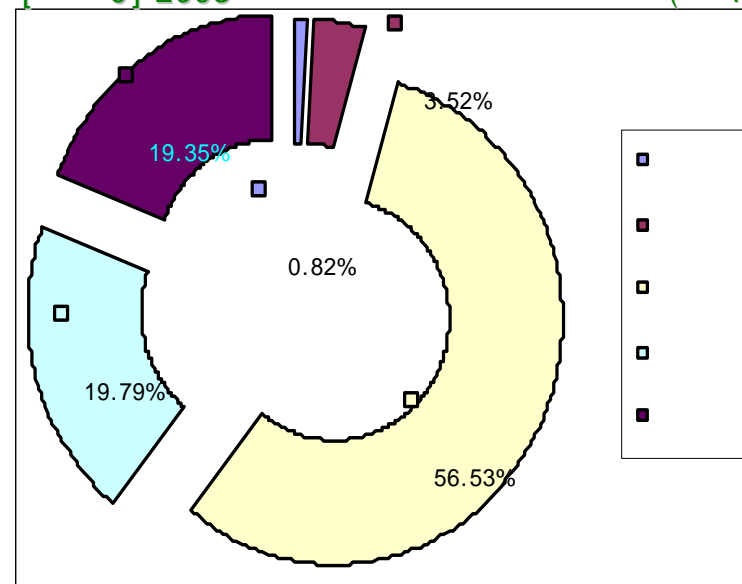
(:)

	1998	1999	2000	2001	2002	2003	1998	1999	2000	2001	2002	2003
	487	764	1,149	1,456	2,134	2,494	0.00%	56.83%	50.44%	26.65%	46.62%	16.85%
	21	77	38	46	33	21	0.00%	268.63%	-50.48%	21.86%	-28.06%	-38.54%
	36	43	48	51	40	88	0.00%	20.84%	12.21%	5.18%	-21.77%	119.85%
	-	-	440	731	1,310	1,410	0.00%	0.00%	0.00%	66.08%	79.08%	7.62%
	286	454	461	453	440	493	0.00%	58.78%	1.61%	-1.78%	-2.80%	12.02%
	145	190	161	174	311	483	0.00%	31.29%	-15.19%	7.87%	78.92%	55.33%

[8] (:%)

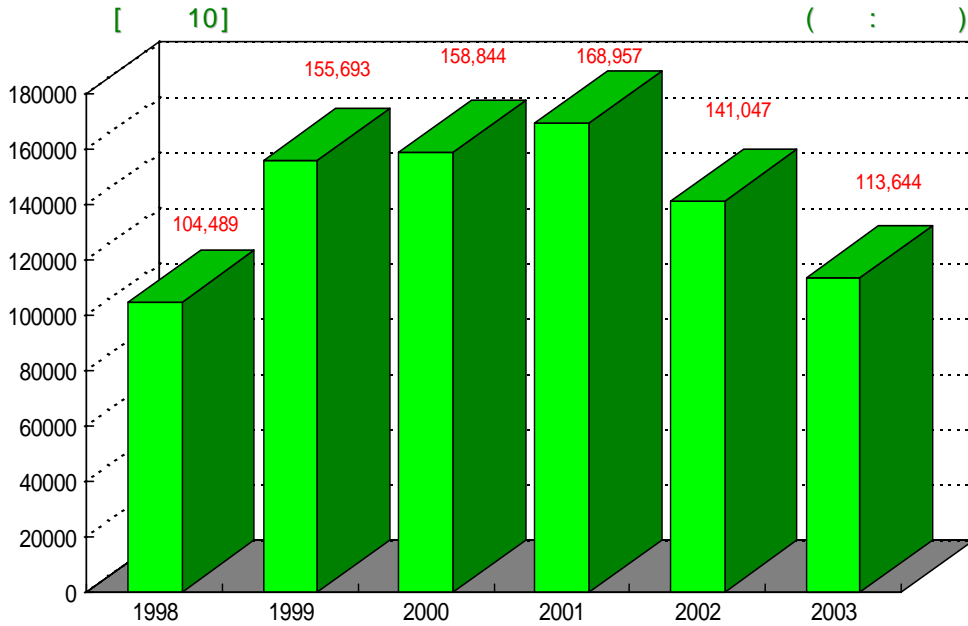


[9] 2003 (:%)



가 , 6 (1998~2003)
 가
 11.5%(1998) → 20%(2003)

가 100 가
 , 2000 440 가 2003
 1,410 3.2 가 가



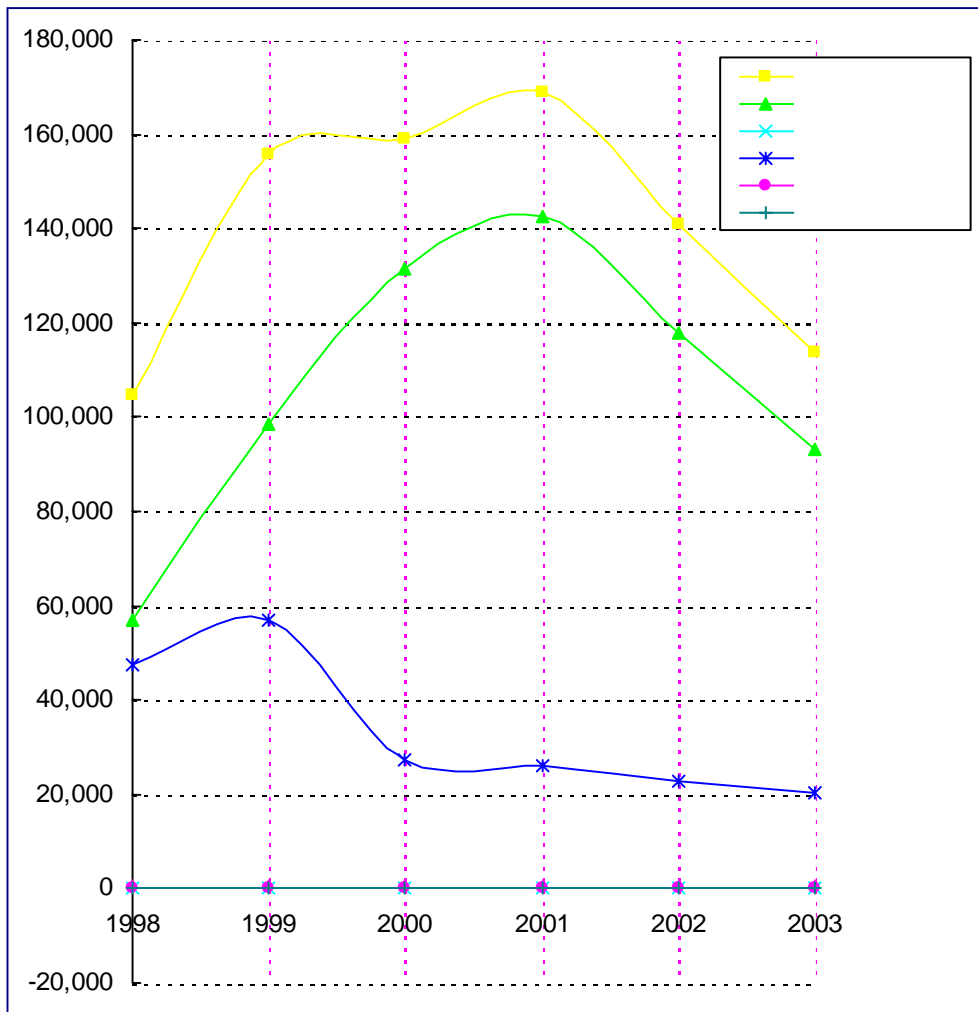
2003 ()
) 1,136 (933 ,
 203) . (1998~2003)
 가 , 2003
 274 (19%)
 가
 , 2002 2003
 553 .

[4] (:)

	1998	1999	2000	2001	2002	2003
	104,489	155,693	158,844	168,957	141,047	113,644
	56,996	98,633	131,356	142,624	117,997	93,307
	91	84	68	61	50	37
	47,402	56,976	27,420	26,272	23,000	20,300

[11]

(:)



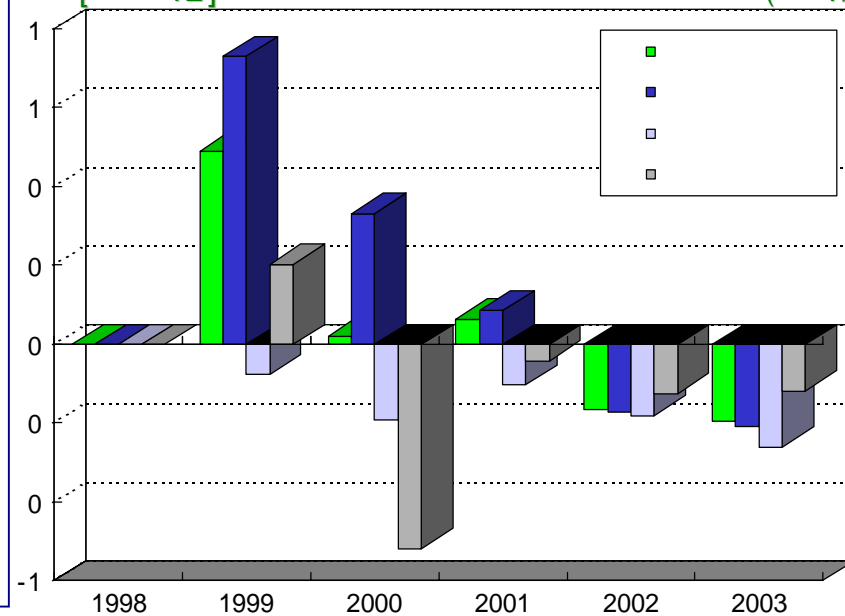
[5]

(:%)

	1998	1999	2000	2001	2002	2003
	0.00%	49.00%	2.02%	6.37%	-16.52%	-19.43%
	0.00%	73.05%	33.18%	8.58%	-17.27%	-20.92%
	0.00%	-7.69%	-19.05%	-10.29%	-18.03%	-26.00%
	0.00%	20.20%	-51.87%	-4.19%	-12.45%	-11.74%

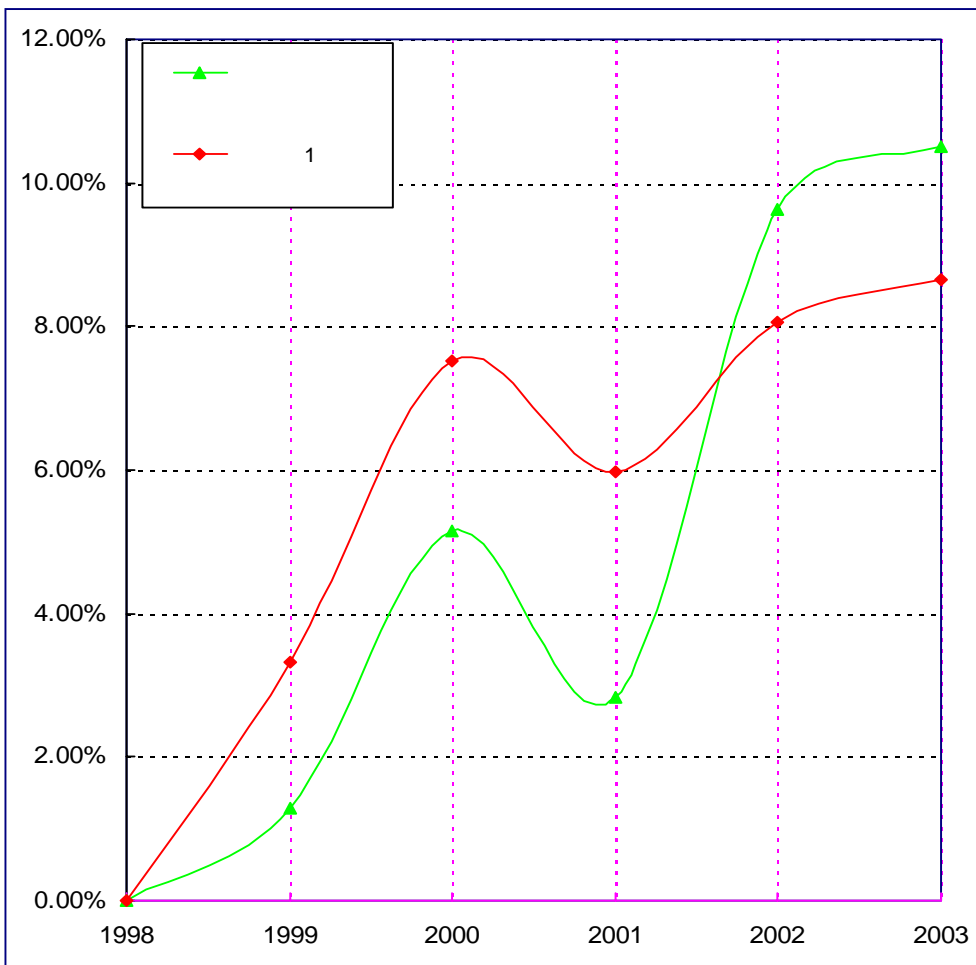
[12]

(:%)



[13]

(:%)



[6]

(: ,)

	1998	1999	2000	2001	2002	2003
()	5,197,900	5,265,373	5,537,091	5,694,577	6,243,161	6,898,652
	2,156	2,031	2,006	1,896	1,906	1,936
¹ ()	2,411	2,593	2,760	3,003	3,276	3,563

2003 689
 가(10.51%)
 6,544
 가 10%

□ ()

()

() 가

[7] 2003

-1.

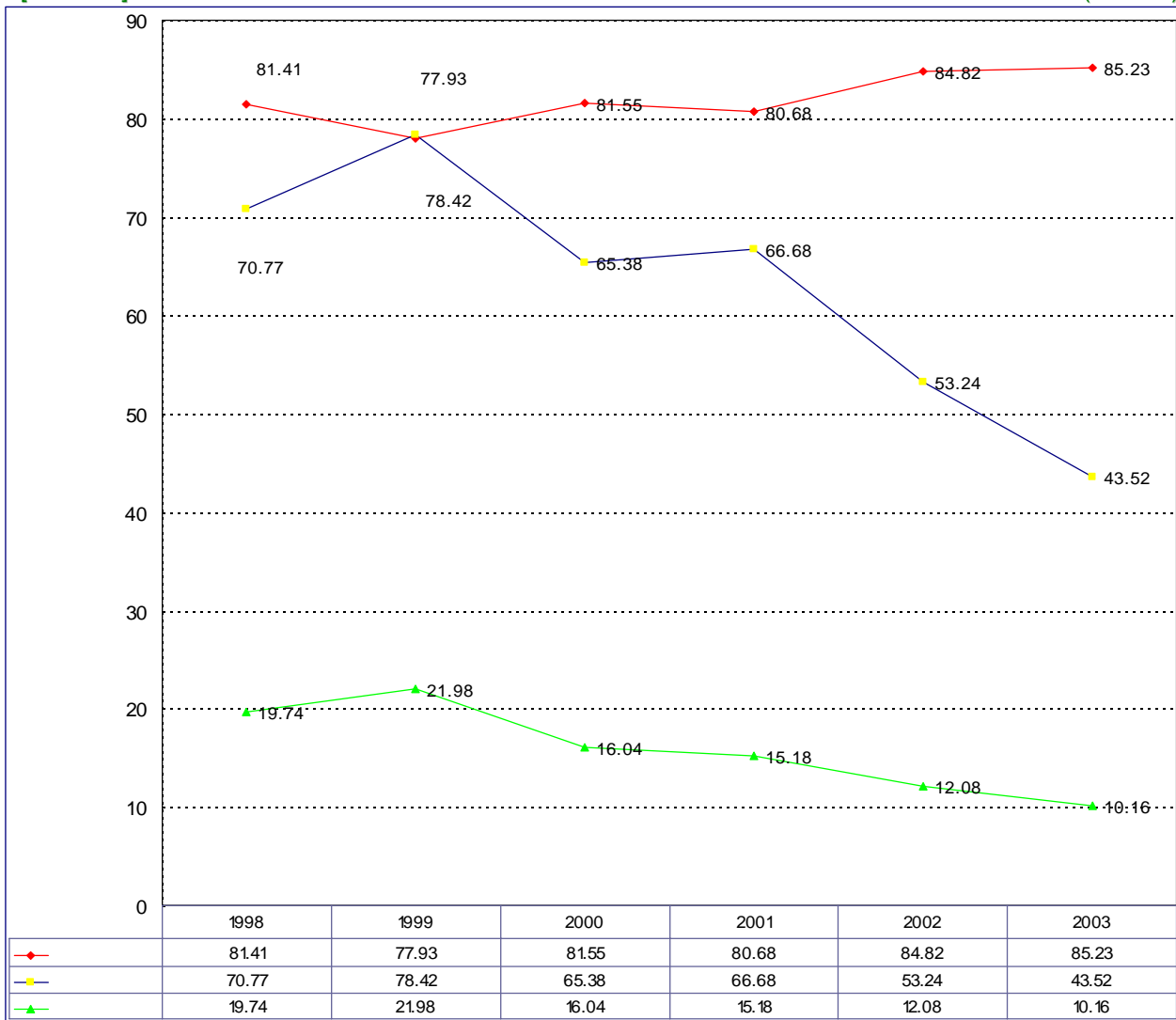
★ (:%,)

		1998	1999	2000	2001	2002	2002	2003
	(+ +) / (,)	81.41%	77.93%	81.55%	80.68%	85.22%	84.82%	85.23%
	(+ +) /	70.77%	78.42%	65.38%	66.68%	52.98%	53.24%	43.52%
	/	19.74%	21.98%	16.04%	15.18%	12.01%	12.08%	10.16%
	(, /)	13.31%	7.63%	9.04%	7.86%	12.69%	6.02%	9.65%
	(, /)	19.73%	30.92%	34.01%	33.31%	21.14%	21.15%	12.71%
	/	1.93%	1.84%	1.59%	2.08%	5.65%	5.68%	3.95%
¹	() /	73	126	168	182	144	144	111
	/	18.90%	43.44%	25.00%	13.67%	1.30%	1.30%	0.00%

★ 2002

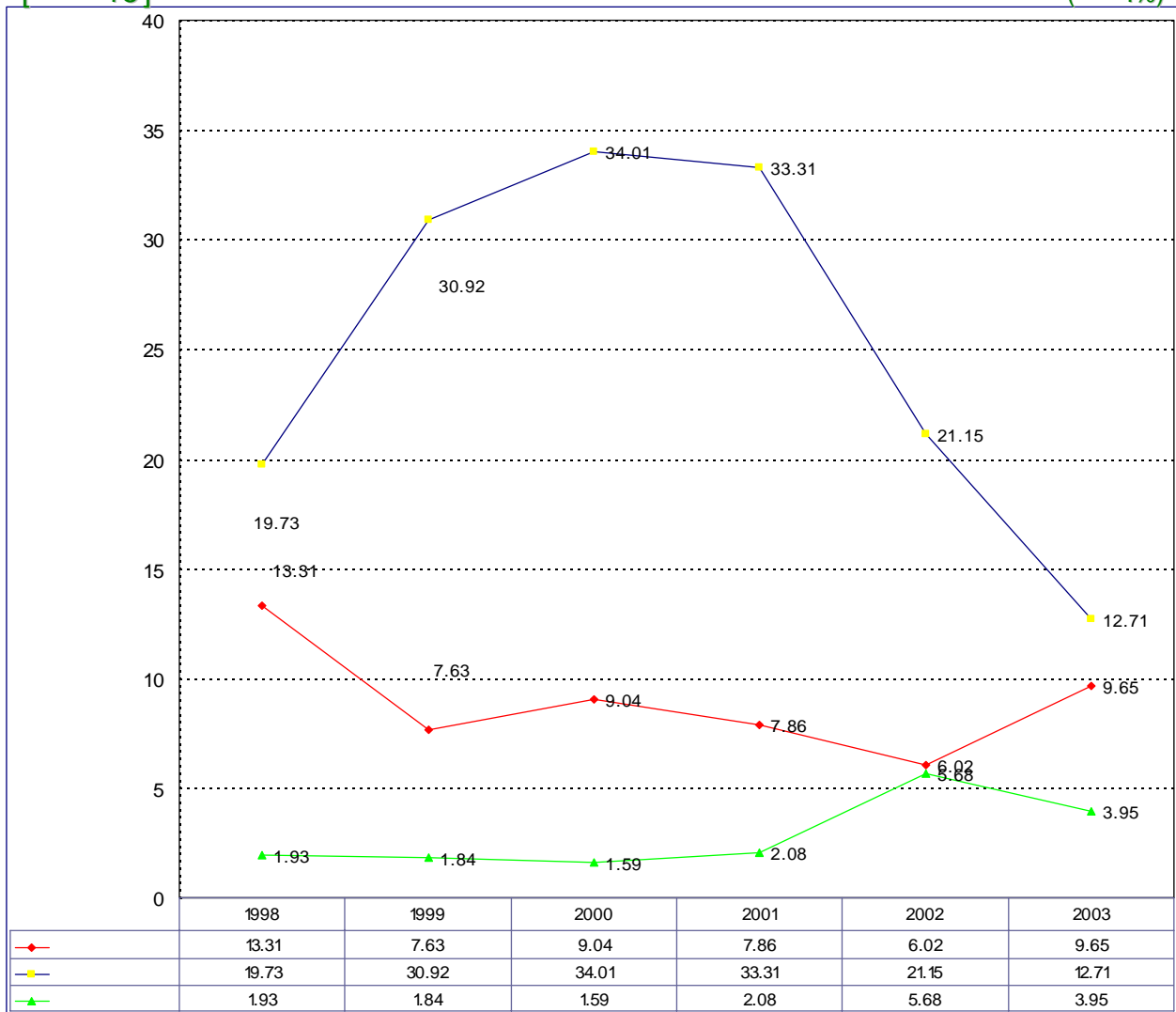
..

[14] (:%)



2003 가
 0.41% 가 ,
 가
 9.72% 2003
 가 () 가

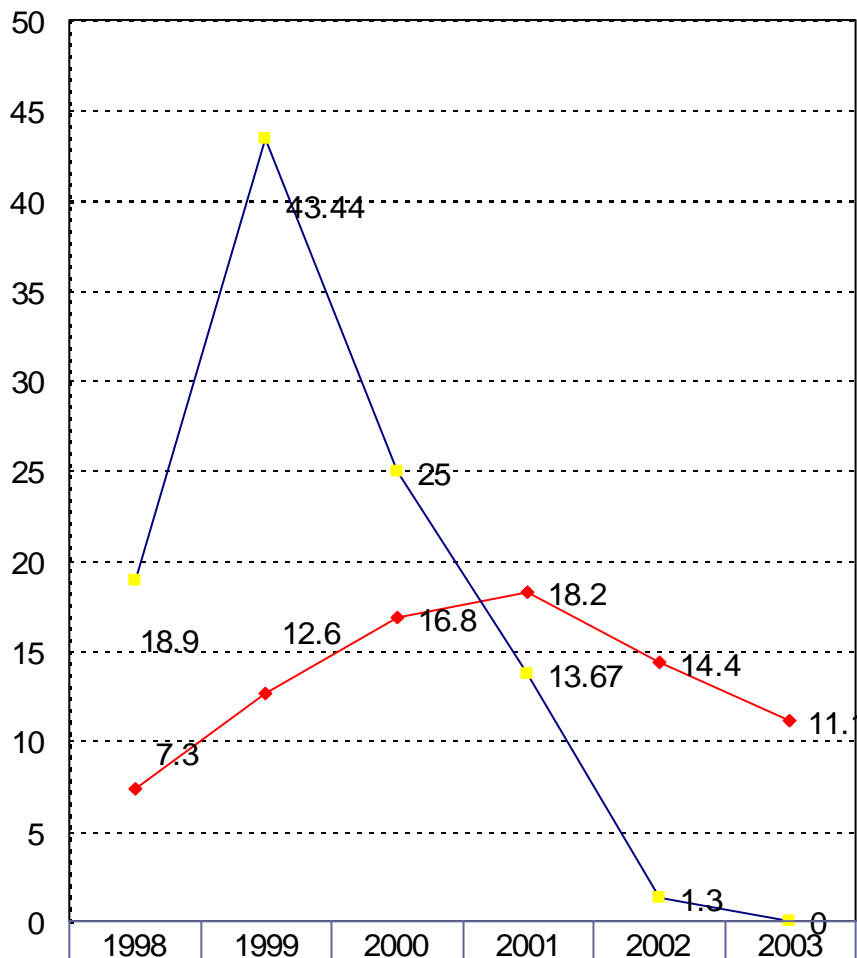
[15] (:%)



2003
 3.63% 가
 2003 27,403
 0
 2003
 1
 2003
 가

[16]

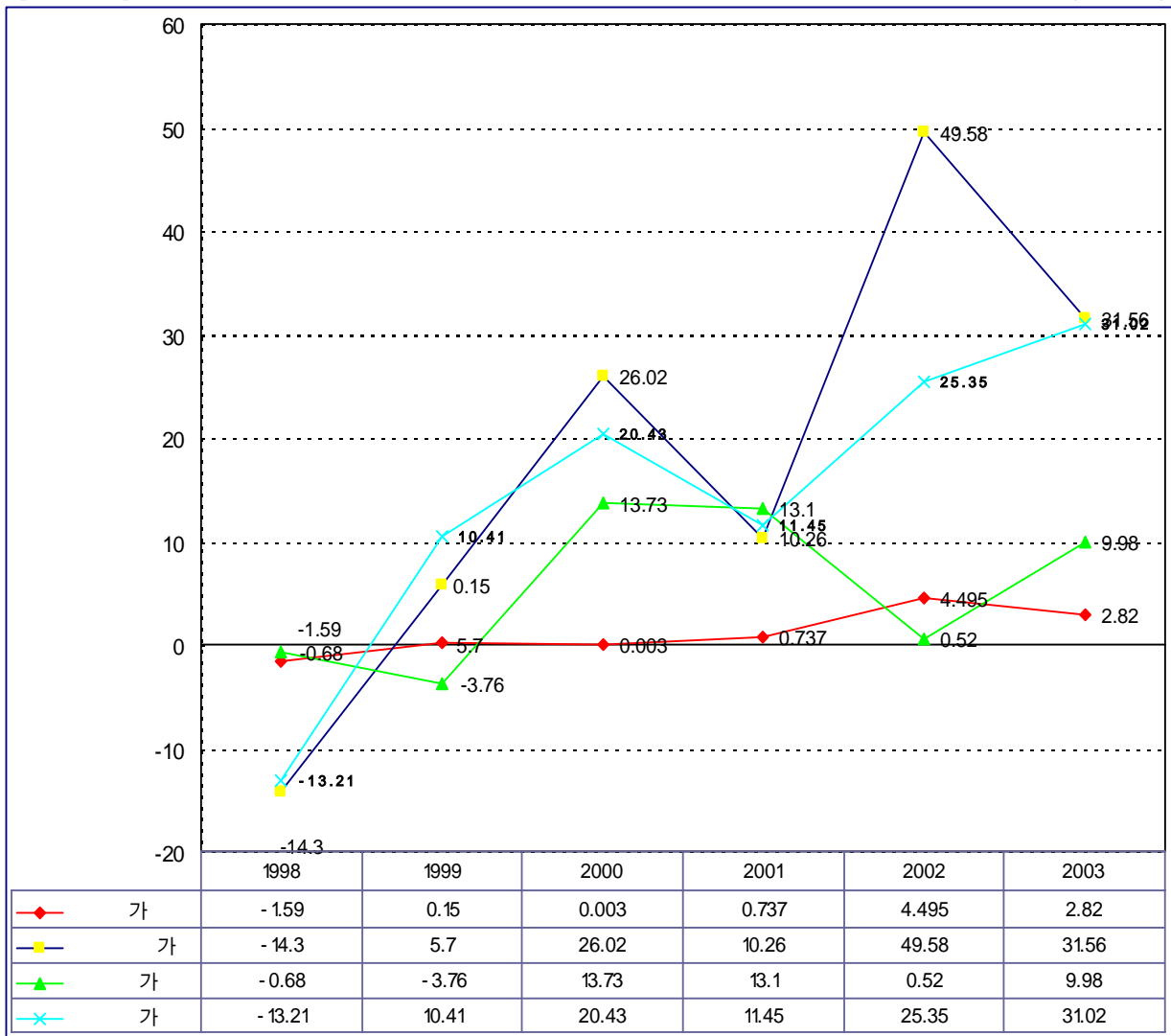
(: , %)



2002
2003
,
,
가 .

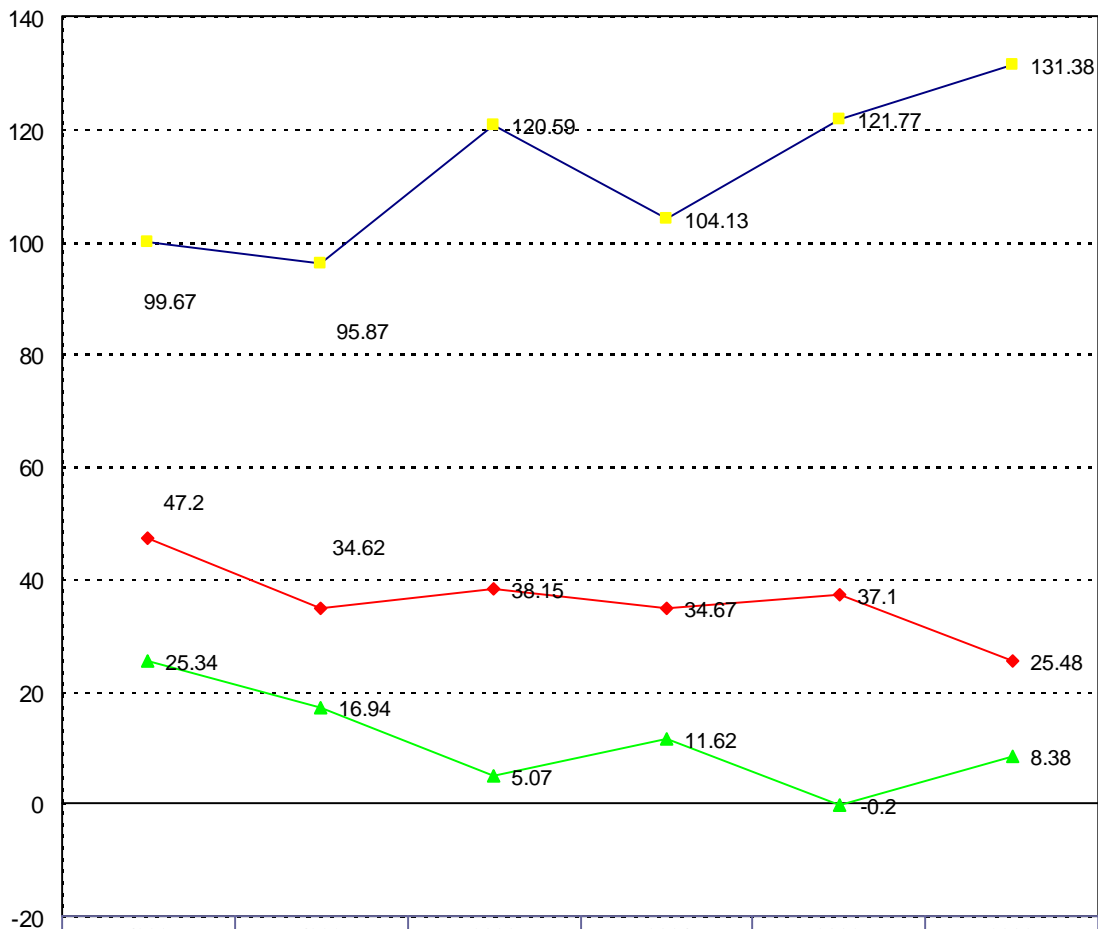
◆ 1	7.3	12.6	16.8	18.2	14.4	11.1
■	18.9	43.44	25	13.67	1.3	0

[17] 가 가 (:%)



가
 2003 2.82% 1998 가
 , 가
 , 가 , 가 ,
 가 가 , 가 ,
 가 가 5 가 5
 13.07%, 가 10.72%, 가 4.58%

[18] 가 (:%)



가 ,
 2003 131.38% 가 ,
 가 25.48%

◆		47.2	34.62	38.15	34.67	37.1	25.48
■	가	99.67	95.87	120.59	104.13	121.77	131.38
▲	가 1	25.34	16.94	5.07	11.62	-0.2	8.38

□ ()

가 (가)

[9] 2003

-3.



(:%)

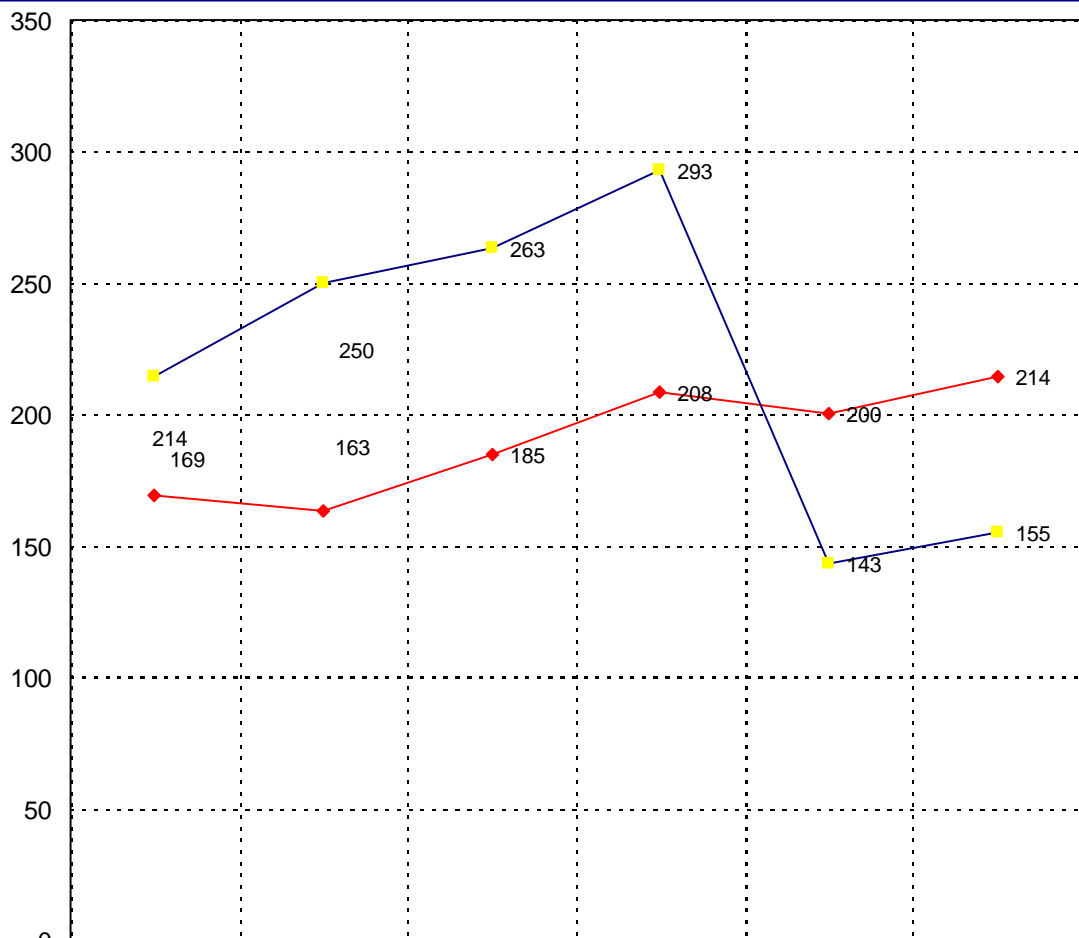
		1998	1999	2000	2001	2002	2002	2003
1 ()	/	169	163	185	208	200	200	214
	가 - 가	-25.97%	14.01%	-0.28%	8.31%	19.30%	31.23%	16.91%
	/	89.79%	90.21%	92.28%	93.83%	91.52%	76.58%	78.14%
가	((- ,) /)	-27.05%	17.76%	38.83%	7.83%	33.87%	70.92%	42.93%
	(/)	8.04%	-4.42%	2.70%	-0.25%	6.64%	-0.20%	7.49%
/	/ () ()	127.58%	104.26%	85.41%	89.59%	52.69%	40.07%	32.05%
	+ /)-((- +)	0.04%	0.12%	0.1%	0.08%	0.03%	2.55%	1.31%
	/	9.40%	4.21%	4.75%	3.86%	6.38%	7.43%	13.78%
1 ()	/	214	250	263	293	307	143	155

★ 2002

..

[19] 1

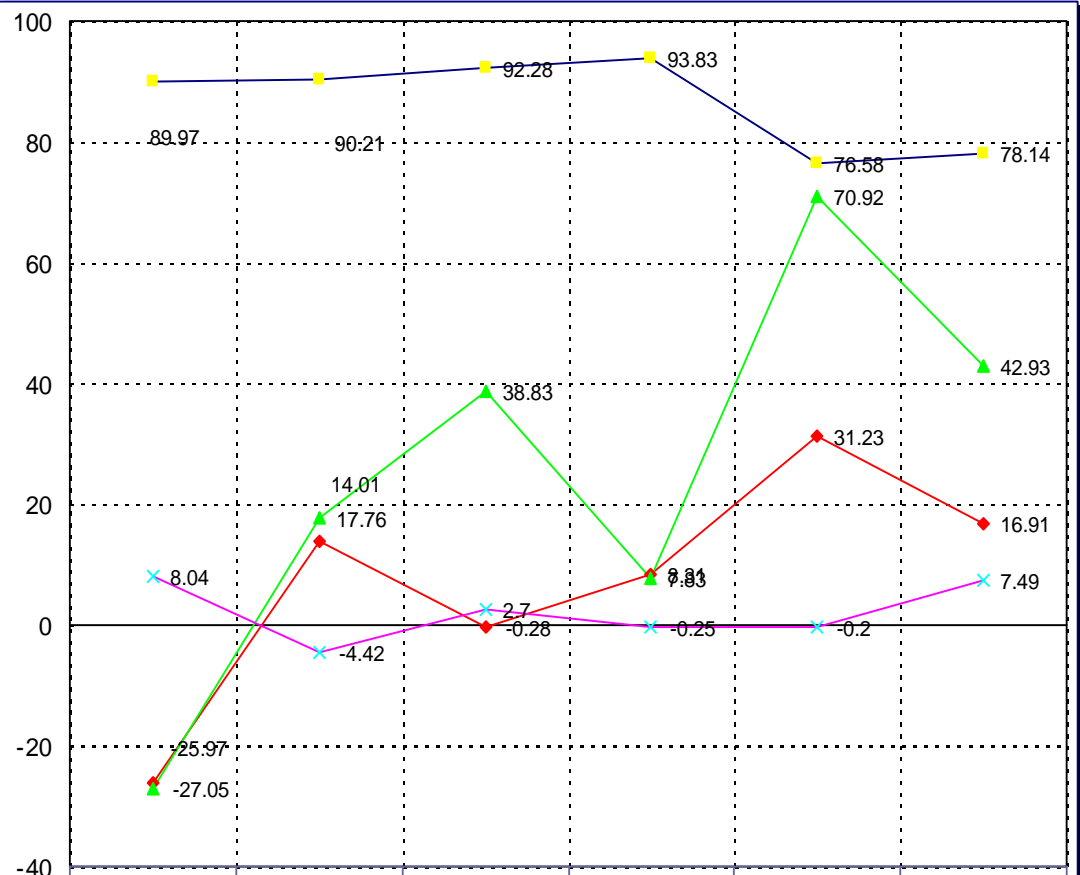
(:)



1
 12,000 (가 8.39%) 가
 가 2.82%

	1998	1999	2000	2001	2002	2003
◆ 1	169	163	185	208	200	214
■ 1	214	250	263	293	143	155

[20] (:%)

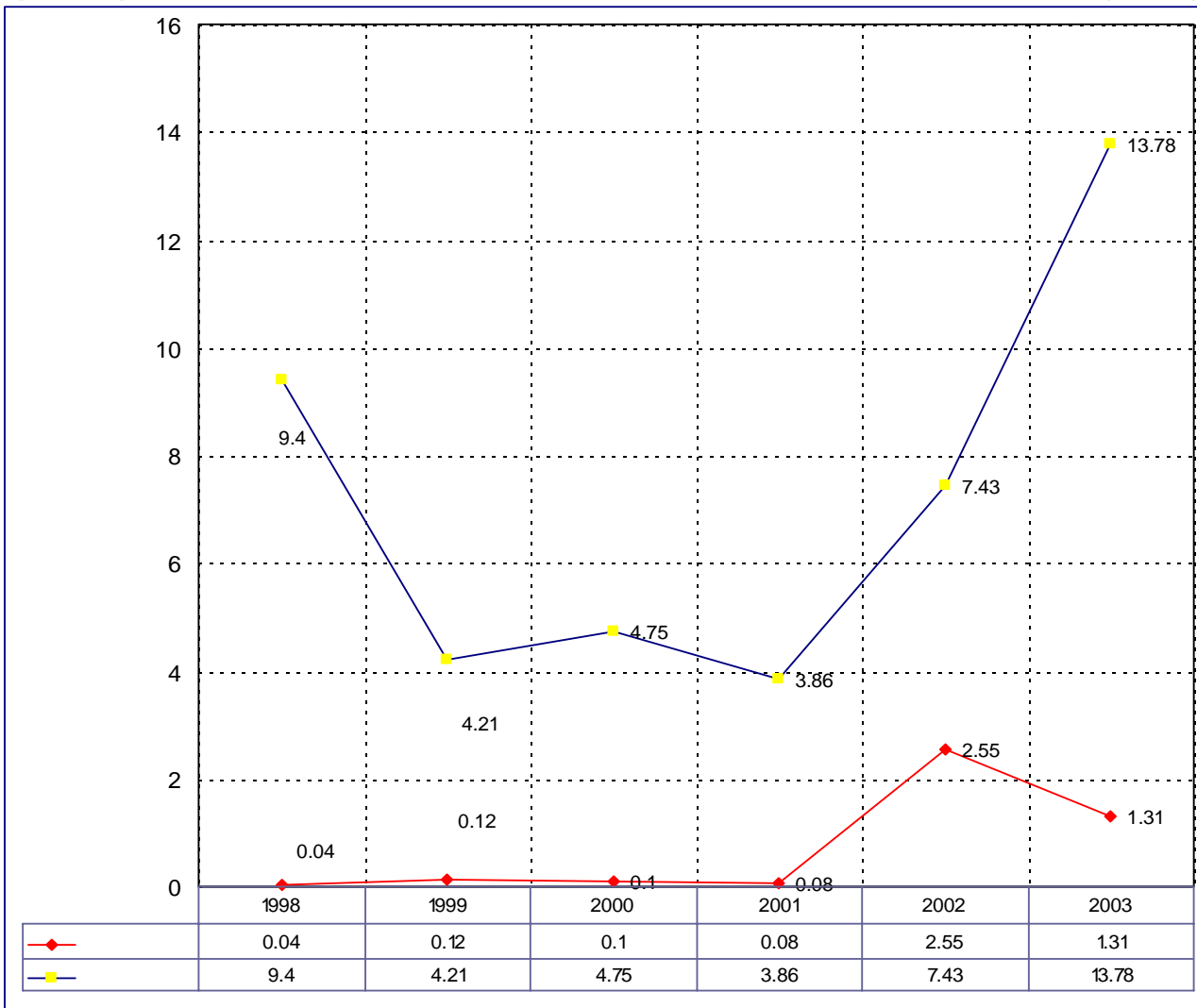


◆	-25.97	14.01	-0.28	8.31	31.23	16.91	
■	89.97	90.21	92.28	93.83	76.58	78.14	
▲	가	-27.05	17.76	38.83	7.83	70.92	42.93
×		8.04	-4.42	2.7	-0.25	-0.2	7.49

가 11% 가 16.91% 가 31.23% 가 1.56% 가 42.93% 가 32.05% 가 42.93% 가 74,570 가 2002 7.49% 가 2003 1.31% 가 -0.2% 가 2.55%

[21]

(:%)



가 6.35%

가
가

[10] 2003

-4.



(:%)

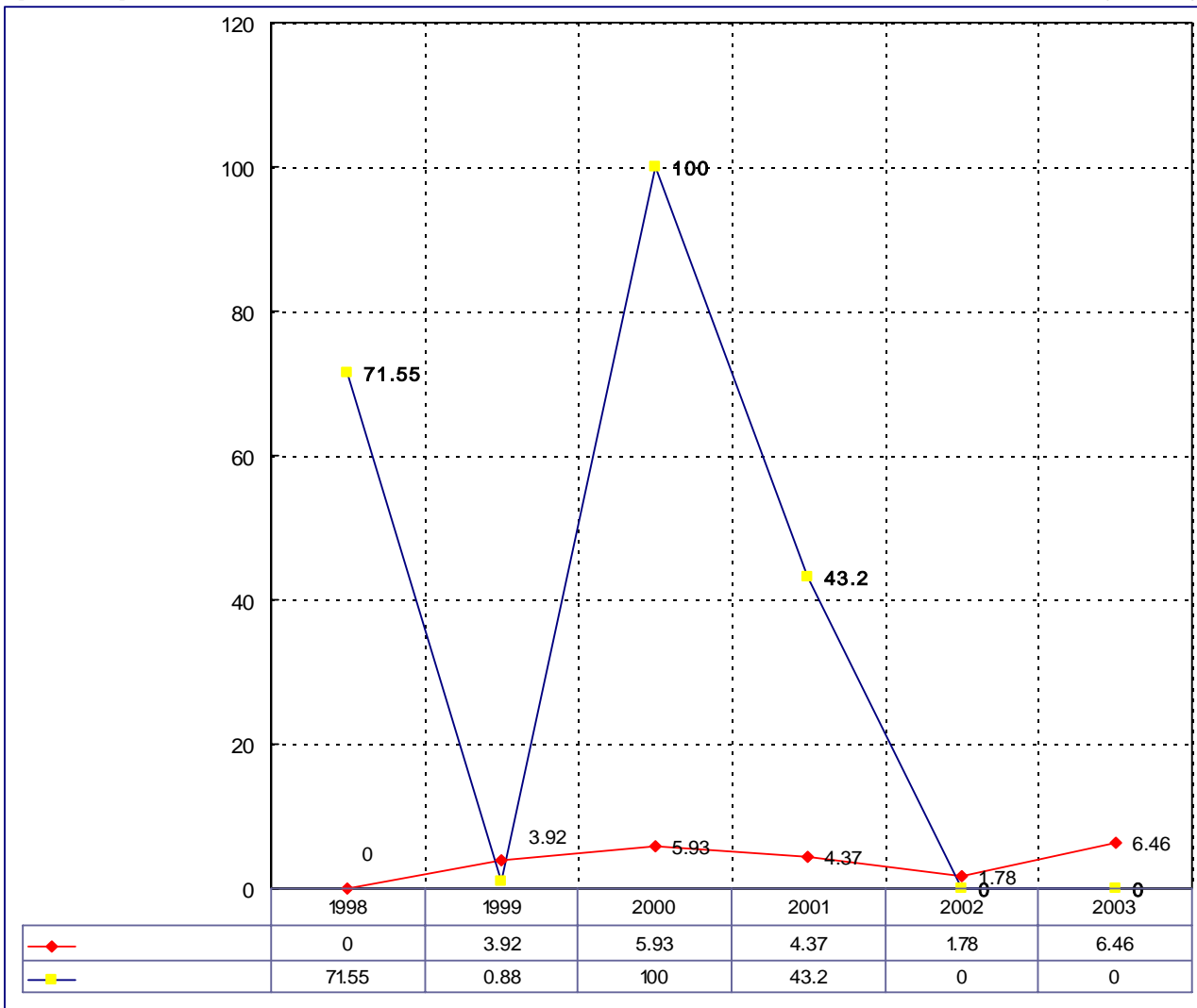
		1998	1999	2000	2001	2002	2002	2003
(-)	÷ ()	0.00%	3.92%	5.93%	4.37%	1.77%	1.78%	6.46%
(-)	÷ ()	-32.47%	43.68%	20.46%	-2.66%	31.36%	30.12%	70.62%
(-)	÷ ()	71.55%	0.88%	100.00%	43.20%	0.00%	0.00%	0.00%
(+)	÷ ()	3.93%	2.72%	2.82%	5.10%	7.00%	7.01%	5.85%
	÷ ()	1.82%	1.36%	0.72%	0.89%	2.04%	2.04%	8.33%
	÷ ()	1.19%	0.27%	0.31%	0.23%	0.00%	0.00%	26.03%
	÷ ()	74.90%	87.44%	82.86%	84.09%	89.61%	73.95%	71.18%
(-)	÷ ()	-105.17%	48.12%	-6.61%	7.68%	18.33%	6.06%	44.81%

★ 2002

..

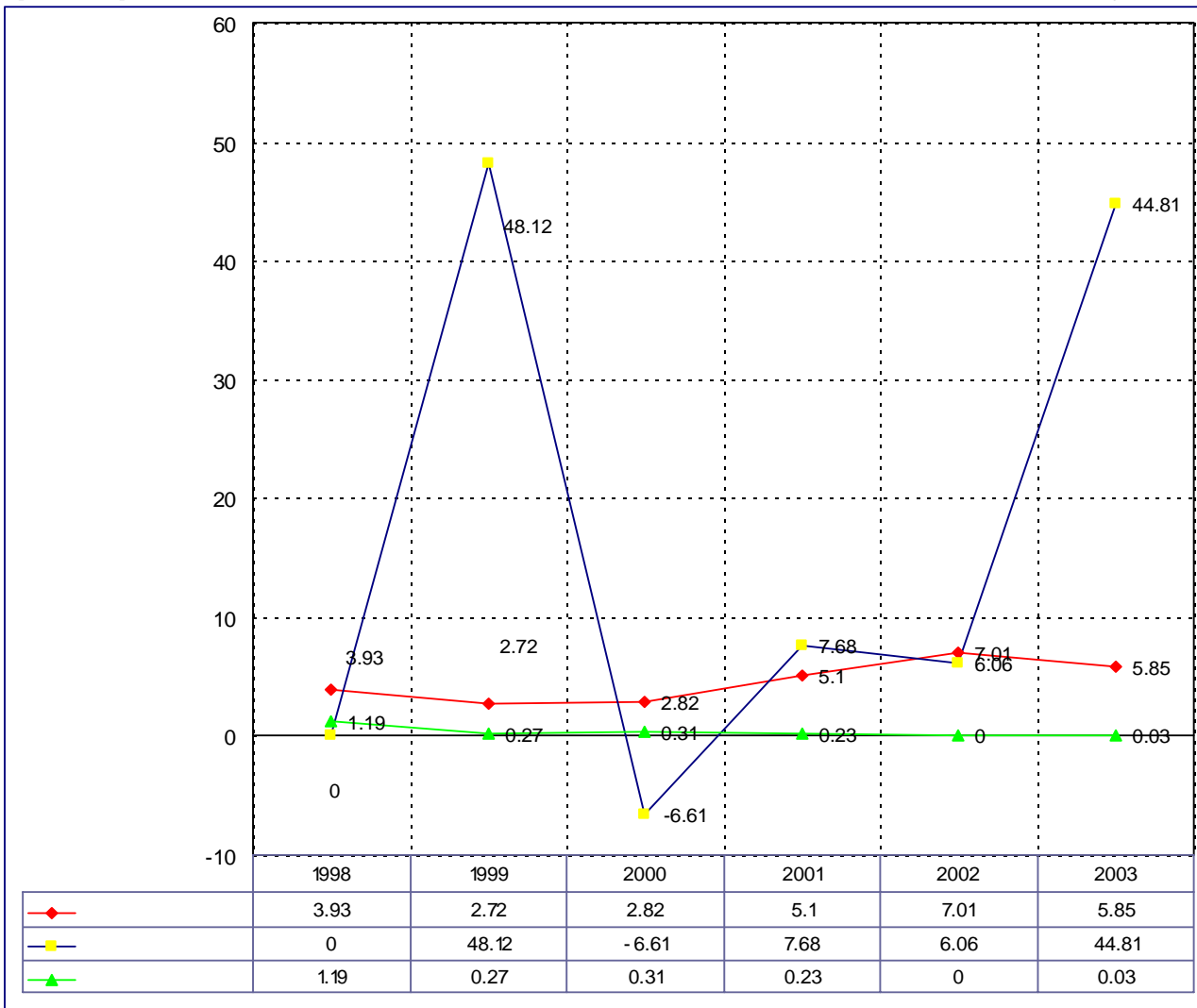
[22]

(:%)



70.62%

[23] , (:%)



가 ,
0.03%



2003

가 10%
가 가

가

가
가

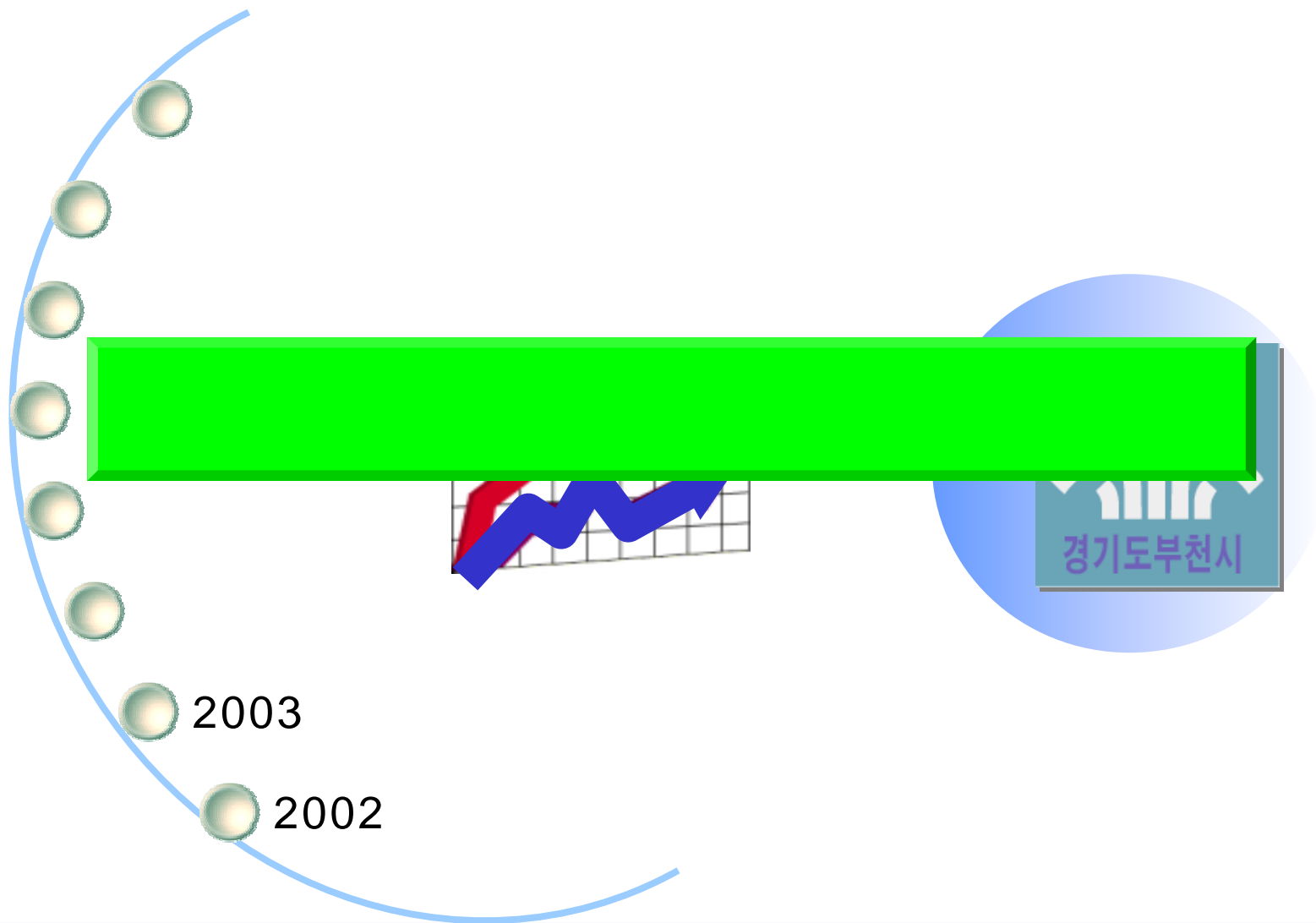
가 2002

가

2001

2003 6.46%

가



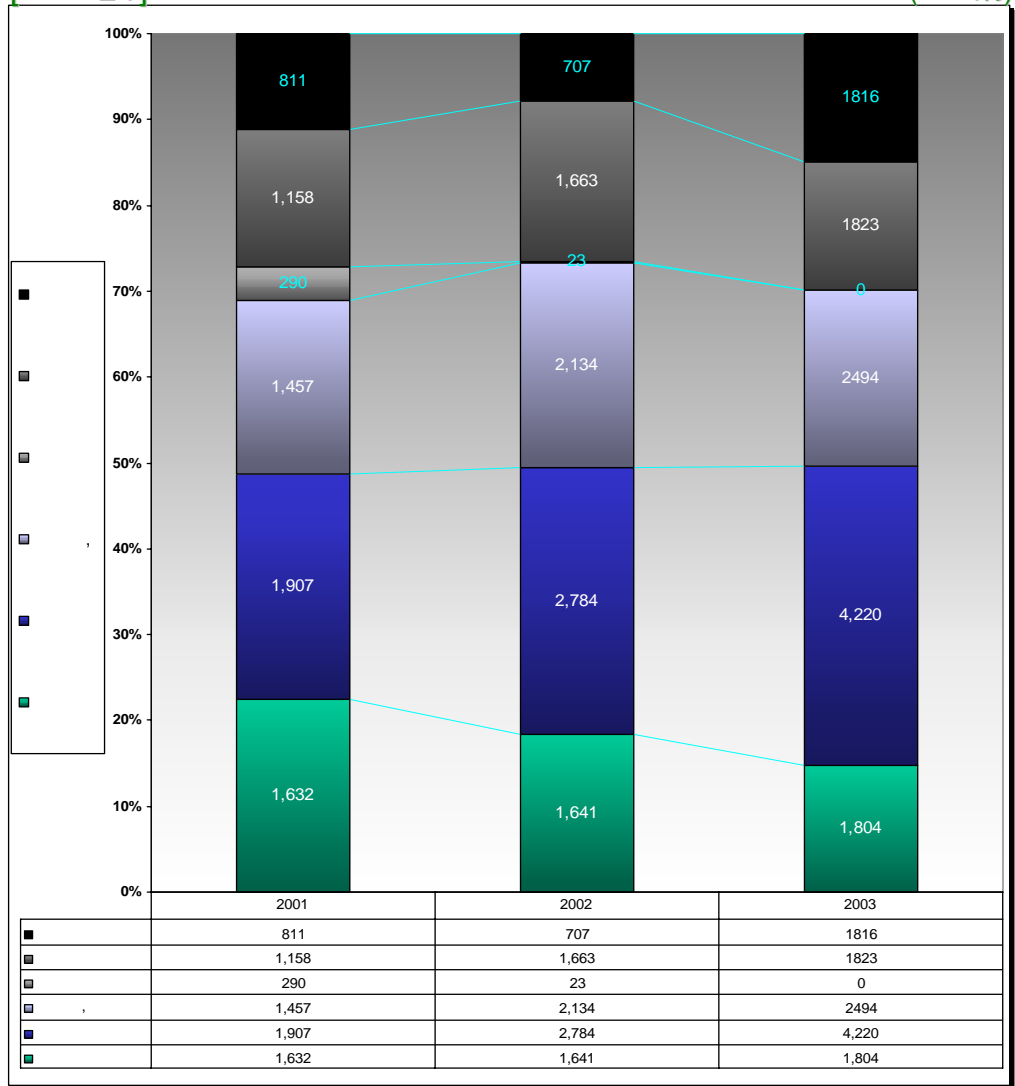
1.

2003 12,157 , 가 8,518
 70% , 가 3,639 30%

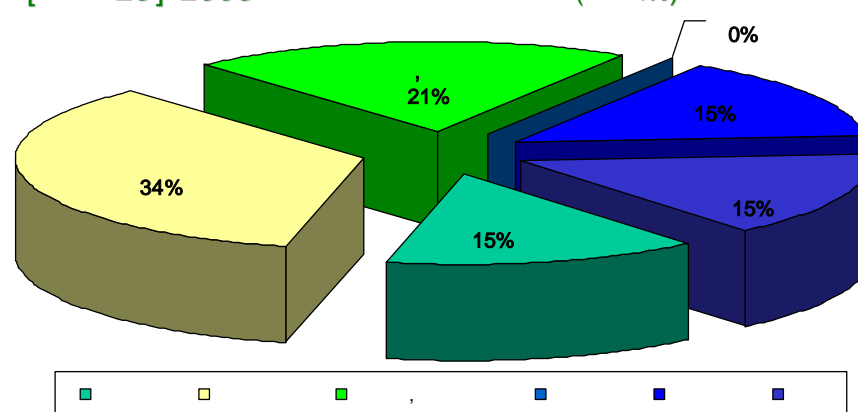
[11] (: ,%)

		()			(%)					
		2001	2002	2003	2001	2002	2003			
		5,286	6,582	8,518	72.86%	100%	73.53%	100%	70%	100%
		1,632	1,641	1,804		30.87%		24.93%		21.18%
		1,907	2,784	4,220		36.08%		42.30%		49.54%
		1,457	2,134	2,494		27.56%		32.42%		29.28%
		290	23	0		5.49%		0.35%		0.00%
		1,969	2,370	3,639	27.14%	100%	26.47%	100%	30%	100%
		1,158	1,663	1,823		58.81%		70.17%		50.10%
		811	707	1,816		41.19%		29.83%		49.90%
		7,255	8,952	12,157	100%		100%		100%	

[24] (:%)



[25] 2003 (:%)



()가 1,804
 21.18%, 4,220 49.54%,
 , 2,494 29.28%,
 가 0 0% 가
 가 가
 가 가

7.2%

0.1%

92.9%

[12]

(: , %)

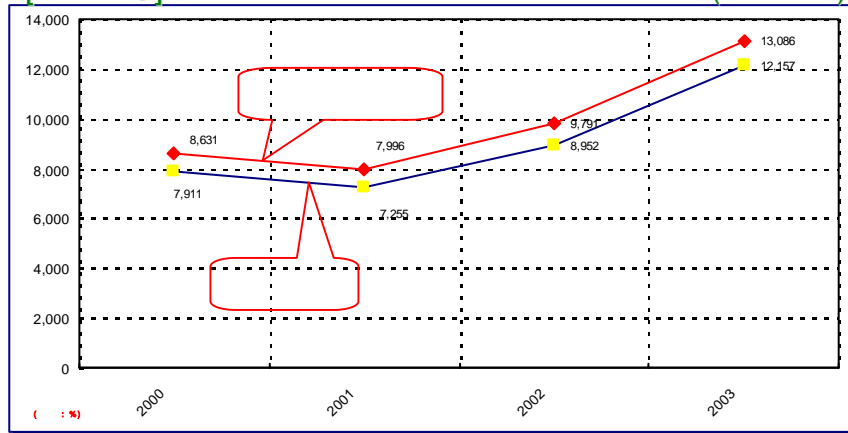
	()				(%)			
	2000	2001	2002	2003	2000	2001	2002	2003
	8,631	7,996	9,791	13,086	100%	100%	100%	100%
	7,911	7,255	8,952	12,157	91.7%	90.7%	91.4%	92.9%
	720	741	839	929	8.3%	9.3%	8.6%	7.1%
	57	75	109	132	0.7%	0.9%	1.1%	1.0%
	663	666	730	797	7.7%	8.3%	7.5%	6.1%

2003

2002

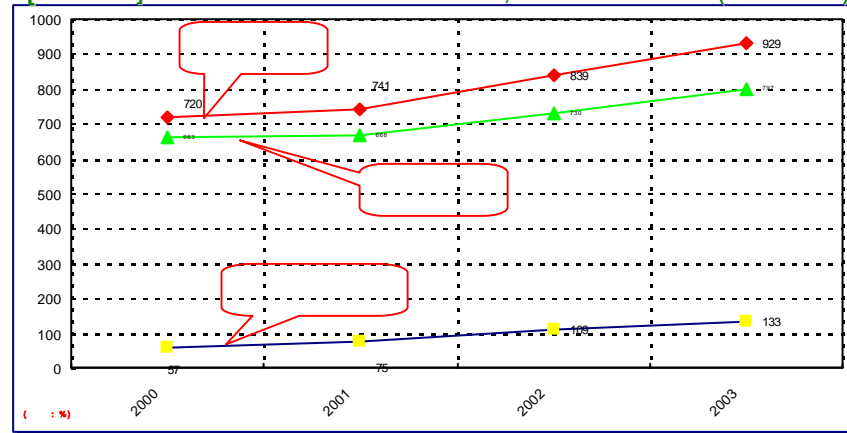
[26]

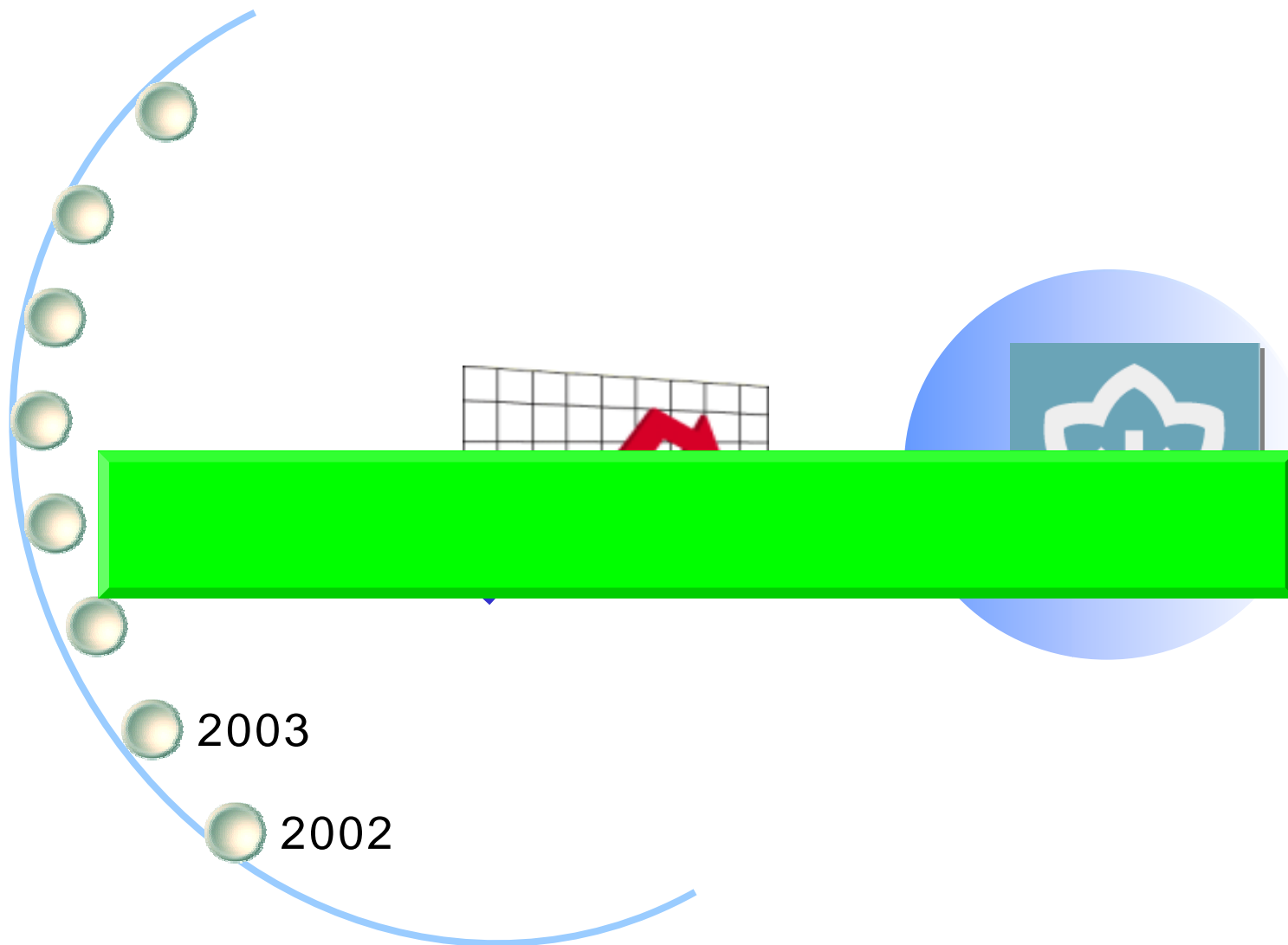
(:)



[27]

(:)





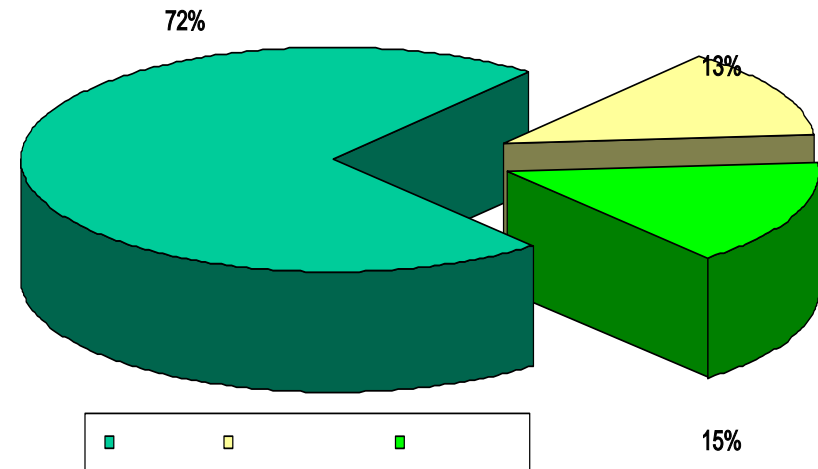
1.

2003 가 3,206 28% 11,419 , 가 8,213 72%

[13] 2003 (: , %)

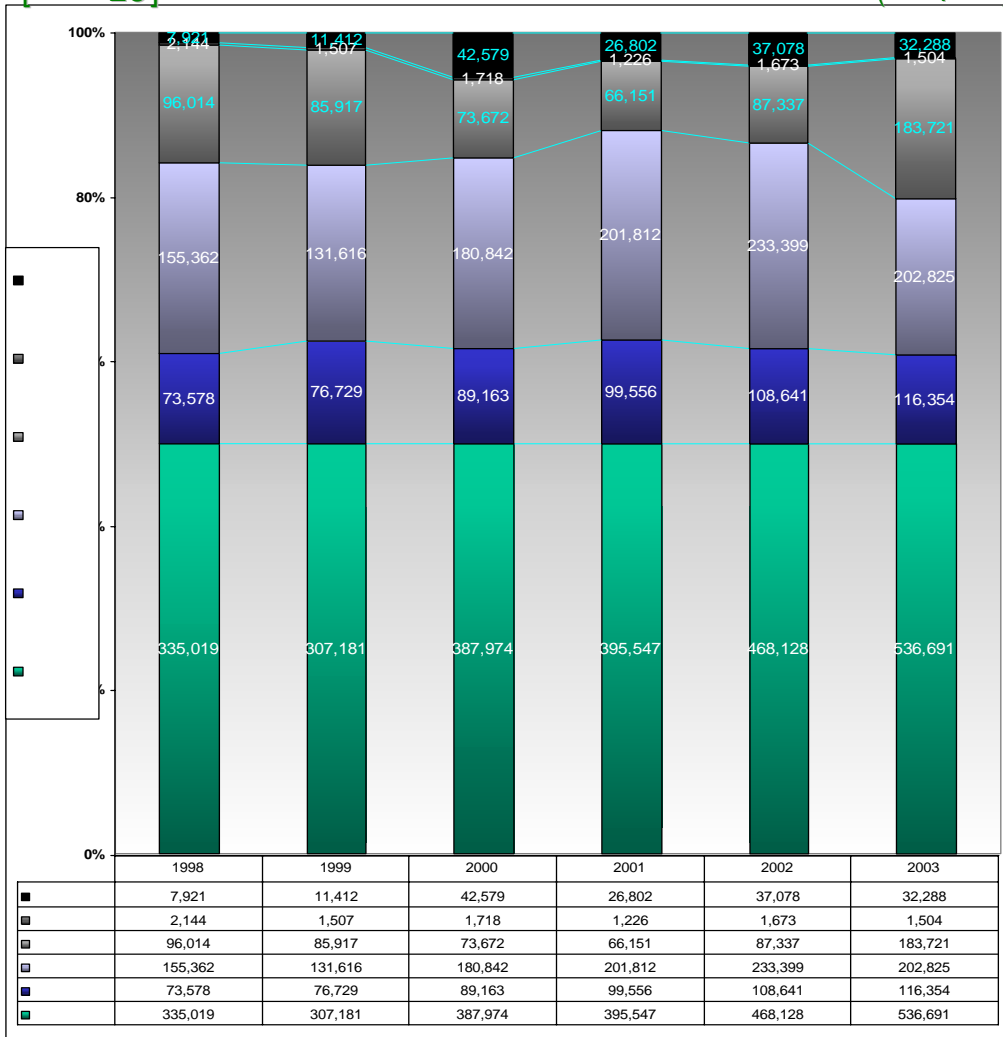
	1,141,893,340,840	665,783,077,700	248,159,812,790	227,950,450,350	80.04%
	821,316,897,580	536,690,694,530	187,671,512,420	96,954,690,630	88.20%
	128,608,387,550	116,353,571,308	5,440,191,410	6,814,624,832	94.70%
	278,541,436,980	202,824,927,460	59,270,842,350	16,445,667,170	94.10%
	317,236,156,050	183,720,708,772	122,960,478,660	10,554,968,618	96.67%
	2,027,104,000	1,503,531,230	-	523,572,770	74.17%
	94,903,813,000	32,287,955,760	-	62,615,857,240	34.02%
	320,576,443,260	129,092,383,170	60,488,300,370	130,995,759,720	59.14%
	146,681,437,860	101,689,432,270	38,641,818,910	6,350,186,680	95.67%
	42,792,928,000	39,793,211,820	509,760,000	2,489,956,180	94.18%
	103,888,509,860	61,896,220,450	38,132,058,910	3,860,230,500	96.28%
	173,895,005,400	27,402,950,900	21,846,481,460	124,645,573,040	28.32%
	44,860,000	16,092,730	-	28,767,270	35.87%
	1,956,969,000	1,641,482,750	-	315,486,250	83.88%
	917,000,000	155,008,000	-	761,992,000	16.90%
	358,000,000	-	-	358,000,000	0.00%
	29,711,026,000	1,231,011,420	4,380,687,750	24,099,326,830	18.89%
	7,966,231,000	416,900	-	7,965,814,100	0.01%
	48,477,919,400	24,358,939,100	17,465,793,710	6,653,186,590	86.28%
	84,463,000,000	-	-	84,463,000,000	0.00%

[28] 2003 (: %)

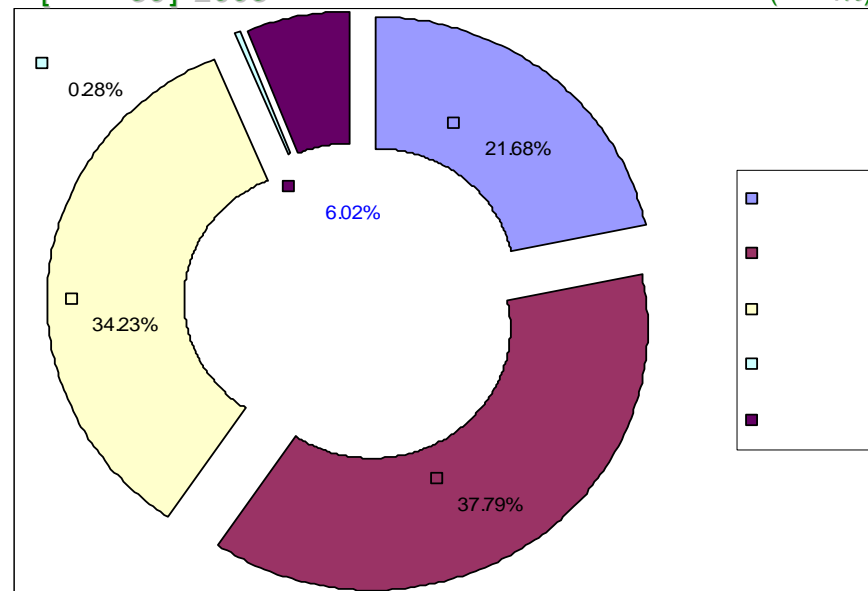


2.

[28] (:)



[30] 2003 (:%)



가 2,028 (37.79%), 가 1,837 (21.68%)
 (34.23%), 가 1,164 (6.02%), 가 0.28%

가 2.1 가 가 , 가

3.

[14] 2003

(: , %)

	988,305	153,588	1,141,893	665,783	248,159	227,951	19.96%
	703,498	117,819	821,317	536,691	187,671	96,955	11.80%
	284,807	35,769	320,576	129,092	60,488	130,996	40.86%
	126,165	20,516	146,681	101,689	38,642	6,350	4.33%
	158,642	15,253	173,895	27,403	21,846	124,646	71.68%

2003	.
1,141,893	19.9%
227,951	
821,317	11.8%
96,955	
320,576	40.8%
130,996	
.	
4.2%	47,613

[15] 2003

(: , %)

	227,951	5,122	6,201	231	34,226	1,834	180,337
	96,955	4,842	4,832	210	27,034	1,596	58,441
	130,996	280	1,369	21	7,192	239	121,895
	6,350	-	375	21	2,811	-	3,143
	124,646	280	993	29	4,381	239	118,724

4.

[16] 2003 () (: , %)

	(A)	(B)			(D)	
	141,047,467,000	27,403,292,440	-	27,403,292,440	-	113,644,174,560
	117,997,365,000	24,690,400,000	-	24,690,400,000	-	93,306,965,000
	23,050,102,000	2,712,892,440	-	2,712,892,440	-	20,337,209,560
	23,000,000,000	2,700,000,000	-	2,700,000,000	-	20,300,000,000
	50,102,000	12,892,440	-	12,892,440	-	37,209,560

[17] 2003 () (: , %)

	(A)	(B)			(D)	
	141,047,467,000	27,403,292,440	-	27,403,292,440	-	113,644,174,560
	117,997,365,000	24,690,400,000	-	24,690,400,000	-	93,306,965,000
	50,102,000	12,892,440	-	12,892,440	-	37,209,560
	23,000,000,000	2,700,000,000	-	2,700,000,000	-	20,300,000,000
1. ()	-	-	-	-	-	-
	-	-	-	-	-	-
	-	-	-	-	-	-
	-	-	-	-	-	-
2.	141,047,467,000	27,403,292,440	-	27,403,292,440	-	113,644,174,560
	117,997,365,000	24,690,400,000	-	24,690,400,000	-	93,306,965,000
	50,102,000	12,892,440	-	12,892,440	-	37,209,560
	23,000,000,000	2,700,000,000	-	2,700,000,000	-	20,300,000,000
3.	-	-	-	-	-	-
	-	-	-	-	-	-
	-	-	-	-	-	-
	-	-	-	-	-	-
4. ()	-	-	-	-	-	-

2003
113,644
141,047

2002
27,403

2002
8.3%

11.5%

19.8%

30%

(5%)

7 , 2006

1,377

가

20%

, 5%

[18] 2003

()

(:)

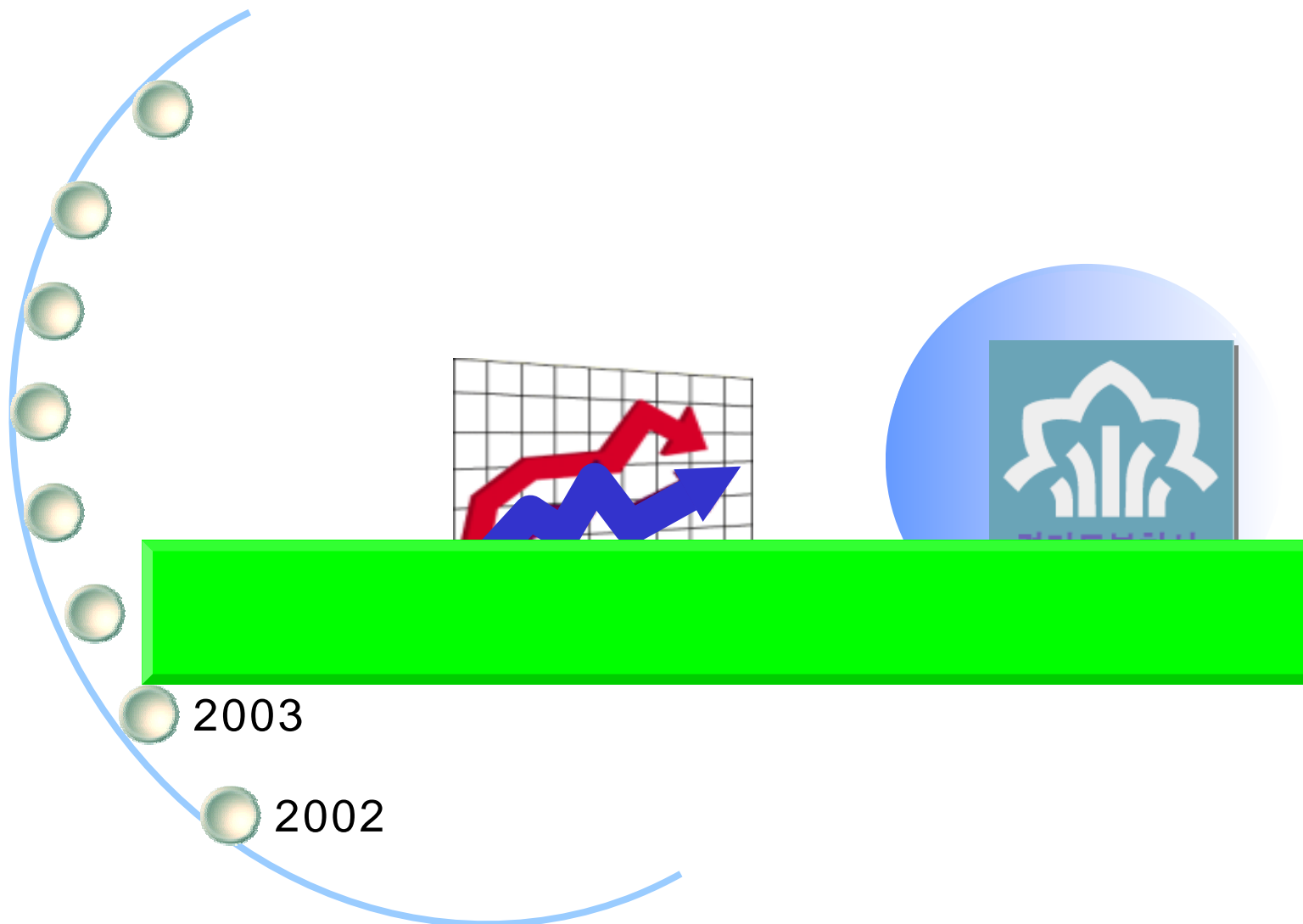
	(A)	(B)				(D)	
	141,047,467,000	27,403,292,440	-	27,403,292,440	-	113,644,174,560	-
	117,997,365,000	24,690,400,000	-	24,690,400,000	-	93,306,965,000	-
	50,102,000	12,892,440	-	12,892,440	-	37,209,560	-
	23,000,000,000	2,700,000,000	-	2,700,000,000	-	20,300,000,000	-
1. ()	-	-	-	-	-	-	-
	-	-	-	-	-	-	-
	-	-	-	-	-	-	-
	-	-	-	-	-	-	-
2.	141,047,467,000	27,403,292,440	-	27,403,292,440	-	113,644,174,560	-
	117,997,365,000	24,690,400,000	-	24,690,400,000	-	93,306,965,000	-
	50,102,000	12,892,440	-	12,892,440	-	37,209,560	-
	23,000,000,000	2,700,000,000	-	2,700,000,000	-	20,300,000,000	-
3.	-	-	-	-	-	-	-
	-	-	-	-	-	-	-
	-	-	-	-	-	-	-
	-	-	-	-	-	-	-
4. ()	-	-	-	-	-	-	-

[19] 2003

[20] 2003

2003 12 31 (:)

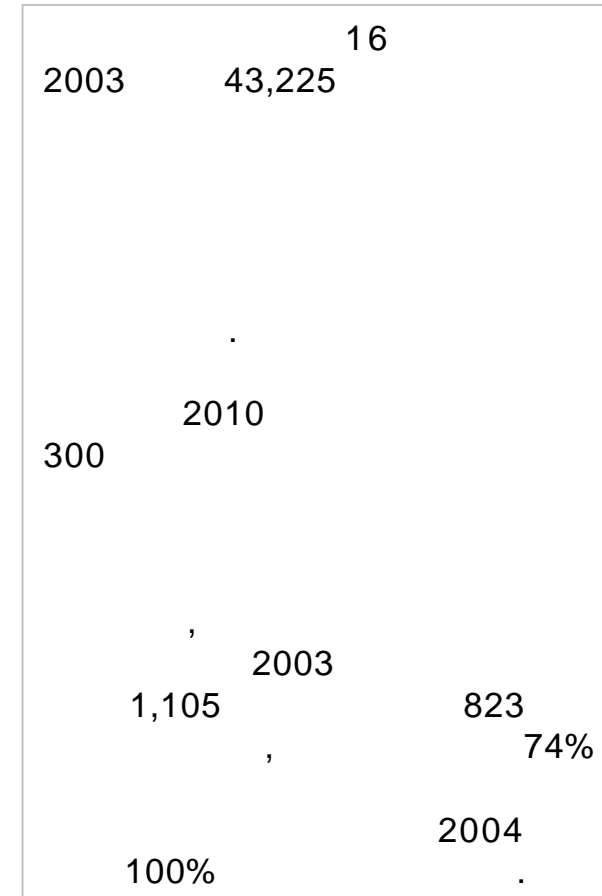
						2002				2003		2003	
					(2004)								
	157,168	-	-	-	1	141,047	36,405	27,403	9,002	113,644	-19.43%	19.43%	72.31%
	1,000	2	10		3.00%	300	109	100	9	200	-33.33%	33.33%	20.00%
	1,000					500	15	100	15	400	-20.00%	20.00%	40.00%
	750	2	10		3.00%	225	82	75	7	150	-33.33%	33.33%	20.00%
	750	2	10		3.00%	375	86	75	11	300	-20.00%	20.00%	40.00%
	4,100	2	10		3.00%	4,100	533	410	123	3,690	-10.00%	10.00%	90.00%
2	100	2	10		3.00%	30	11	10	1	20	-33.33%	33.33%	20.00%
1	100	2	10		3.00%	60	12	10	2	50	-16.67%	16.67%	50.00%
1	100	2	10		3.00%	60	12	10	2	50	-16.67%	16.67%	50.00%
1	100	2	10		3.00%	70	12	10	2	60	-14.29%	14.29%	60.00%
1	100	2	10		3.00%	70	12	10	2	60	-14.29%	14.29%	60.00%
2	400	2	10		3.00%	400	52	40	12	360	-10.00%	10.00%	90.00%
2	12,600	3	5	40%	3.50%	7,560	8,165	7,560	605	-	-100.00%	100.00%	0.00%
2	5,000	3	5	40%	3.50%	4,000	1,300	1,000	300	3,000	-25.00%	25.00%	60.00%
2	10,000	3	5	40%	3.50%	10,000	416	-	416	10,000	0.00%	0.00%	100.00%
2	5,000	3	5	40%	3.50%	5,000	1,375	1,000	375	4,000	-20.00%	20.00%	80.00%
2	5,000	5	10		4.00%	5,000	5,196	5,000	196	-	-100.00%	100.00%	0.00%
2	3,000	5	10		6.00%	3,000	147	-	147	3,000	0.00%	0.00%	100.00%
	9,000	5	10		6.00%	9,000	443	-	443	9,000	0.00%	0.00%	100.00%
	15,000	5	10		6.00%	15,000	738	-	738	15,000	0.00%	0.00%	100.00%
1-16	3,000					3,000	3,225	3,000	225	-	-100.00%	100.00%	0.00%
가	3,000					3,000	3,225	3,000	225	-	-100.00%	100.00%	0.00%
	15,000	5	10		4.00%	15,000	1,087	-	1,087	15,000	0.00%	0.00%	100.00%
	20,000	5	10		6.00%	20,000	1,748	-	1,748	20,000	0.00%	0.00%	100.00%
가	10,300	2	3		5.60%	8,967	527	-	527	8,967	0.00%	0.00%	87.06%
	4,785					3,072	3,321	3,072	249	-	-100.00%	100.00%	0.00%
	413					82	84	82	2	-	-100.00%	100.00%	0.00%
	420					126	130	126	4	-	-100.00%	100.00%	0.00%
8627	150	1	19	()	6.00%	50	16	13	3	37	-26.00%	26.00%	24.67%
5	9,000	2	10	40%	3.50%	6,300	1,341	900	441	5,400	-14.29%	14.29%	60.00%
5	7,000	2	10	30%	3.50%	6,300	1,109	700	409	5,600	-11.1%	11.1%	80.00%
5	6,000	2	10	30%	3.50%	5,400	951	600	351	4,800	-11.1%	11.1%	80.00%
5	5,000	2	10	30%	3.50%	5,000	825	500	325	4,500	-10.00%	10.00%	90.00%



[21] 2003

(:)

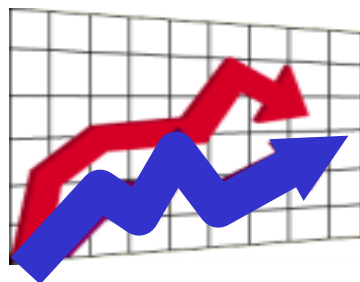
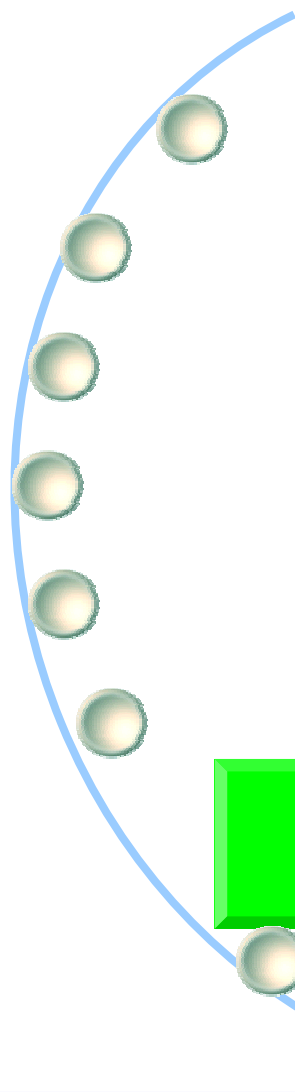
	45,723,029,310	45,612,421,690	45,723,029,310	45,612,421,690
1.	-	24,957,320	-	-
	-	24,957,320	-	-
		24,301,570		
		655,750		
2.	45,067,965,110	44,793,489,160	45,723,029,310	45,612,421,690
	7,565,423,000	6,991,706,000	1,848,834,000	650,844,940
	2,121,669,000	2,329,472,560	2,088,070,000	1,730,863,310
	5,746,000	5,746,000		
	35,375,127,110	35,466,564,600	41,786,125,310	43,230,713,440
3.	-	-	-	-
4.	655,064,200	793,975,210	-	-
	655,064,200	793,975,210		
5.				



[22] 2003

(:)

	45,612,421,690	6,991,706,000	142,582,000	73,067,070	2,330,128,310		35,460,881,970	614,056,340	45,612,421,690	2,387,454,250	-	15,919,000	1,437,637,350	62,170,000	5,746,000	865,981,900	43,224,967,440
	3,490,415,260	200,000,000	-	-	161,959,700	(1.0) (4.71)	2,608,391,360	520,064,200	3,490,415,260	190,450,000	-	-	190,450,000	-	-	-	3,299,965,260
	3,518,340,080	200,000,000	-	-	171,255,050	(5.40) (5.11)	3,147,085,030	-	3,518,340,080	114,842,620	-	-	114,842,620	-	-	-	3,403,497,460
가 가	1,037,812,330	-	-	-	58,129,640	(5.46) (4.60)	979,682,690	-	1,037,812,330	3,330,240	-	-	-	-	-	3,330,240	1,034,482,090
	15,943,116,940	300,000,000	-	-	1,104,735,860	(6.26) (4.33)	14,538,381,080	-	15,943,116,940	822,620,170	-	-	-	-	-	822,620,170	15,120,496,770
	729,454,410	100,000,000	-	-	36,492,870	(5.28) (3.90)	592,961,540	-	729,454,410	40,031,490	-	-	-	-	-	40,031,490	689,422,920
	250,000,000	250,000,000	-	-	-	(4.00)	-	-	250,000,000	-	-	-	-	-	-	-	250,000,000
	920,031,750	300,000,000	-	73,067,070	7,185,450	(1.0) (4.70)	515,477,660	24,301,570	920,031,750	84,689,000	-	15,919,000	6,600,000	62,170,000	-	-	835,342,750
	1,140,495,650	200,000,000	-	-	55,587,820	(6.30) (4.75)	879,161,830	5,746,000	1,140,495,650	57,460,000	-	-	51,714,000	-	5,746,000	-	1,083,035,650
	3,324,989,420	700,000,000	-	-	172,483,870	(7.0) (5.57)	2,446,822,920	5,682,630	3,324,989,420	188,060,160	-	-	188,060,160	-	-	-	3,136,929,260
	606,159,690	200,000,000	-	-	16,273,790	(1.0) (4.33)	331,623,960	58,261,940	606,159,690	56,125,630	-	-	56,125,630	-	-	-	550,034,060
	3,982,954,530	200,000,000	-	-	196,881,540	(3.68) (4.86)	3,586,072,990	-	3,982,954,530	179,000,000	-	-	179,000,000	-	-	-	3,803,954,530
	475,909,460	-	-	-	22,775,930	(4.88)	453,133,530	-	475,909,460	-	-	-	-	-	-	-	475,909,460
	519,405,950	-	142,582,000	-	17,766,280	(4.75)	359,057,670	-	519,405,950	-	-	-	-	-	-	-	519,405,950
	5,903,031,270	3,403,566,000	-	-	172,778,290	(4.72)	2,326,686,980	-	5,903,031,270	-	-	-	-	-	-	-	5,903,031,270
	1,484,235,550	242,185,000	-	-	47,637,020	(4.78)	1,194,413,530	-	1,484,235,550	-	-	-	-	-	-	-	1,484,235,550
	2,286,069,400	695,955,000	-	-	88,185,200	(1.0) (4.01)	1,501,929,200	-	2,286,069,400	650,844,940	-	-	650,844,940	-	-	-	1,635,224,460



2003

2002

1. 2003

2003	.		1,141,893			
		19.9%	227,951			
	: 821,317		11.8%	96,955		
	: 320,576		40.8%	130,996		
	227,951					
	4.2%		47,613			
	: 38,514	4.7%				
	: 9,100	2.8%(2.2%,	3.4%)		
2002	:		15.4%,	17.3%,	8.8%,	16.7%,
			10.6%,	7.1%		

					(가	34)
	(1%)						
	(1,411)	660		(,)	
	(87.7%)							

2003

✓ 2003

(: , %)

		A	B	C	D	(D/C),%	(D/B),%	E	(E/B),%
		988,305	1,141,893	227,951	172,377	75.60%	15.10%	55,574	0.049
		703,498	821,317	96,955	58,441	60.30%	7.10%	38,514	4.70%
		284,807	320,576	130,996	113,936	87.00%	35.50%	17,060	5.30%
		126,165	146,681	6,350	3,143	49.50%	2.10%	3,207	2.20%
		41,850	42,793	2,490	922	37.00%	2.20%	1,568	3.70%
		84,315	103,888	3,860	2,221	57.50%	2.10%	1,639	1.60%
		158,642	173,895	124,646	110,793	88.90%	63.70%	13,853	8.00%
		45	45	29	22	75.90%	49.90%	7	15.60%
		1,957	1,957	315	6	1.90%	0.30%	309	15.80%
		917	917	762	29	3.80%	3.20%	733	80.00%
		358	358	358	108	30.10%	30.20%	250	70.00%
		29,399	29,711	24,099	23,637	98.00%	79.60%	462	1.60%
		7,966	7,966	7,966	-	0.00%	0.00%	7,966	100.00%
		33,537	48,478	6653	2,528	38.00%	5.20%	4,125	8.50%
		84463	84463	84463	84,463	100.00%	100.00%	0	0.00%

2. ()

: 377
 : 3,184m²(936)
 : 5,500 (400 , 5,100)

1999 550 2 15
 2000 9 (550 2)
 2000 10 ~2001 2
 2001 5 (550 1,2)
 2001 7 ,
 2004 1 2

3
 가 2001 4 2003 4
 가 2

3. 21 ()

2003 9 21 ~12	"	"	13,000	.	19,600
"		11			

			1	.	
--	--	--	---	---	--

				가	.
--	--	--	--	---	---

4. ()

	: 9
	: 4,918,283
	: 2,782,993
	: 2,135,290
*	: 2,052,263

27,265	가	(15,262
가	.)

(ASP :	.)
--------	---	---

✓ 2003

()																
가				가				가								
2,697,833,400	204,317,000	957,755,000	612,948,000	344,807,000	1,535,761,400	2,597,402,450	204,317,000	957,755,000	612,948,000	344,807,000	1,435,330,450	100,430,950	0	0	0	0
845,837,340	46,358,000	273,734,000	139,075,000	134,659,000	525,745,340	788,111,460	46,358,000	273,734,000	139,075,000	134,659,000	468,019,460	57,725,880	0	0	0	0
466,382,280	46,358,000	194,482,000	139,075,000	55,407,000	325,542,260	446,567,250	46,358,000	194,482,000	139,075,000	55,407,000	205,727,250	19,815,010	0	0	0	0
377,312,010	30,046,000	126,136,000	90,136,000	36,000,000	221,130,010	377,312,010	30,046,000	126,136,000	90,136,000	36,000,000	221,130,010	0	0	0	0	0
287,825,080	30,046,000	126,135,000	90,136,000	35,999,000	131,644,080	287,825,080	30,046,000	126,135,000	90,136,000	35,999,000	131,644,080	0	0	0	0	0
402,351,160	30,046,000	126,135,000	90,136,000	35,999,000	246,170,160	400,125,240	30,046,000	126,135,000	90,136,000	35,999,000	243,944,240	2,225,920	0	0	0	0
318,125,550	21,463,000	111,133,000	64,390,000	46,743,000	185,529,550	297,461,410	21,463,000	111,133,000	64,390,000	46,743,000	164,865,410	20,664,140	0	0	0	0

✓ 2003 가 ()

()																
가				가				가								
756,522,740	170,268,000	135,555,000	72,973,000	62,582,000	315,144,740	730,899,010	170,268,000	135,555,000	72,973,000	62,582,000	289,521,010	25,623,730	0	0	0	0
112,586,560	34,054,000	27,111,000	14,586,000	12,516,000	51,421,560	101,250,000	34,054,000	27,111,000	14,586,000	12,516,000	40,085,000	11,336,560	0	0	0	0
175,312,370	34,053,000	27,111,000	14,586,000	12,516,000	114,148,370	162,851,580	34,053,000	27,111,000	14,586,000	12,516,000	101,687,580	12,460,790	0	0	0	0
115,711,490	34,053,000	27,111,000	14,586,000	12,516,000	54,547,490	115,711,490	34,053,000	27,111,000	14,586,000	12,516,000	54,547,490	0	0	0	0	0
89,016,490	34,054,000	27,111,000	14,584,000	12,517,000	27,851,490	89,016,490	34,054,000	27,111,000	14,584,000	12,517,000	27,851,490	0	0	0	0	0
128,340,830	34,054,000	27,111,000	14,584,000	12,517,000	67,175,830	126,514,450	34,054,000	27,111,000	14,584,000	12,517,000	65,349,450	1,826,380	0	0	0	0

✓ 2003 가 ()

()																
가				가				가								
109,255,200	34,053,000	27,111,000	14,585,000	12,516,000	48,091,200	108,857,170	34,053,000	27,111,000	14,585,000	12,516,000	47,493,170	598,030	0	0	0	598,030
109,255,200	34,053,000	27,111,000	14,585,000	12,516,000	48,091,200	108,857,170	34,053,000	27,111,000	14,585,000	12,516,000	47,493,170	598,030	0	0	0	598,030



5. ()



(15)
67




가

✓ 2003

()

	1,346,235,000	1,160,120,230	186,114,770	86.18%
	73,000,000	68,932,530	4,067,470	94.43%
	1,519,999,000	1,325,332,740	194,666,260	87.19%
	14,064,000	13,988,000	76,000	99.46%
	6,099,941,000	4,490,890,180	1,609,050,820	73.62%
	92,742,336,070	86,884,242,930	5,858,093,140	93.62%
	26,432,869,800	14,635,356,480	11,797,512,320	55.97%
	3,988,957,000	3,622,092,600	366,864,400	90.80%
가	972,489,000	865,283,390	107,205,610	88.98%
	1,802,495,000	1,230,508,460	571,986,540	68.27%
	620,303,000	536,869,440	83,433,560	86.55%
	796,922,000	572,740,260	224,181,740	71.87%
	371,931,000	362,980,200	8,950,800	97.59%
	5,303,533,000	5,098,820,550	204,712,450	96.14%
	7,790,769,000	6,512,911,660	1,277,857,340	83.60%
	22,602,405,500	16,364,610,940	6,237,794,560	72.40%
	14,836,684,000	13,613,943,170	1,222,740,830	91.76%
	26,546,200,600	14,494,294,810	12,051,905,790	54.60%
	2,016,274,000	1,176,072,580	840,201,420	58.33%
	3,860,259,300	2,129,433,680	1,730,825,620	55.16%
	157,457,415,720	61,825,346,380	95,632,069,340	39.26%
	102,339,657,000	100,791,835,000	1,547,822,000	98.49%
	269,659,000	115,785,070	153,873,930	42.94%
	5,719,262,000	2,955,261,290	2,764,000,710	51.67%
	961,827,000	834,287,160	127,539,840	86.74%
	1,319,564,000	1,229,212,160	90,351,840	93.15%
	11,397,000	11,396,880	120	100.00%
	2,000,000,000	2,000,000,000	-	100.00%
	29,144,201,800	13,144,400,740	15,999,801,060	45.10%
	8,896,857,000	2,772,253,460	6,124,603,540	31.16%
	42,637,840,000	39,263,857,170	3,373,982,830	92.09%
	3,235,619,000	3,002,172,320	233,446,680	92.79%
	29,010,484,970	18,818,146,850	10,192,338,120	64.87%
	7,402,669,010	6,979,929,110	422,739,900	94.29%
	150,750,000	140,640,390	10,109,610	93.29%
	3,246,000	3,241,560	4,440	99.86%
	2,538,722,000	2,409,625,590	129,096,410	94.91%
	9,812,058,960	5,409,463,430	4,402,595,530	55.13%
	6,087,526,000	5,073,710,136	1,013,815,864	83.35%
	271,976,000	261,437,870	10,538,130	96.13%
	1,351,823,960	1,208,594,000	143,229,960	89.40%
	20,768,278,000	20,463,963,180	304,314,820	98.53%
	4,086,628,000	3,983,800,890	102,827,110	97.48%
	22,194,090,740	12,564,113,062	9,629,977,678	56.61%
가	64,608,000	60,317,690	4,290,310	93.36%
	4,505,490,000	4,017,614,662	487,875,338	89.17%
	3,868,630,000	2,946,465,260	922,164,740	76.16%
	132,396,000	111,236,600	21,159,400	84.02%
	1,151,689,580	1,097,352,260	54,337,320	95.28%
	10,994,481,000	10,637,275,020	357,205,980	96.75%
	2,191,071,000	2,142,943,520	48,127,480	97.80%
	13,584,673,730	6,100,884,530	7,483,789,200	44.91%
가	63,412,000	54,790,360	8,621,640	86.40%
	2,302,800,000	1,958,558,120	344,241,880	85.05%
	2,768,581,000	2,568,919,760	199,661,240	92.79%
	101,896,000	100,564,930	1,331,070	98.69%
	1,354,598,380	1,287,459,920	67,138,460	95.04%
	11,495,475,000	11,030,779,420	464,695,580	95.96%
	2,365,969,000	2,276,031,990	89,937,010	96.20%
	12,528,945,520	7,784,711,760	4,744,233,760	62.13%
가	61,700,000	57,513,830	4,186,170	93.22%
	2,291,554,000	2,036,103,710	255,450,290	88.85%
	749,237,189,650	536,691,421,870	212,545,767,780	71.63%

6.

가	,	,
60,000	,	100,000

가	.
---	---

.



()

	53,824,000	36,199,070	17,624,930	67.25%
	31,500,000	31,493,800	6,200	99.98%
	16,200,000	15,858,600	341,400	97.89%
	1,800,000	1,800,000	0	100.00%
	284,280,000	269,756,170	14,523,830	94.89%
	48,000,000	47,945,000	55,000	99.89%
	11,200,000	11,035,400	164,600	98.53%
	14,400,000	14,384,100	15,900	99.89%
	40,200,000	37,796,100	2,403,900	94.02%
	67,730,000	51,542,930	16,187,070	76.10%
	64,100,000	52,386,720	11,713,280	81.73%
	36,800,000	36,790,800	9,200	99.98%
	29,800,000	29,800,000	0	100.00%
	11,409,000	11,404,300	4,700	99.96%
	14,400,000	12,583,100	1,816,900	87.38%
	9,000,000	8,999,500	500	99.99%
	7,800,000	7,799,500	500	99.99%
	20,400,000	20,397,840	2,160	99.99%
	29,100,000	26,695,320	2,404,680	91.74%
	17,960,000	17,955,400	4,600	99.97%
	22,680,000	21,724,150	955,850	95.79%
	19,200,000	19,194,400	5,600	99.97%
	16,800,000	16,800,000	0	100.00%
	27,660,000	27,581,700	78,300	99.72%
	20,760,000	19,653,300	1,106,700	94.67%
	20,560,000	20,255,500	304,500	98.52%
	14,500,000	14,485,000	15,000	99.90%
	14,000,000	13,996,800	3,200	99.98%
	13,800,000	13,787,900	12,100	99.91%
	25,200,000	25,196,800	3,200	99.99%
	9,000,000	8,994,420	5,580	99.94%
	11,400,000	11,400,000	0	100.00%
	49,800,000	43,900,000	5,900,000	88.15%
	1,019,000	1,016,000	3,000	99.71%
	5,130,000	4,860,000	270,000	94.74%
	18,200,000	18,190,900	9,100	99.95%
	54,100,000	52,553,620	1,546,380	97.14%
	16,350,000	16,346,000	4,000	99.98%
	11,450,000	11,445,000	5,000	99.96%
	9,150,000	9,150,000	0	100.00%
	23,700,000	23,700,000	0	100.00%
	21,989,000	21,890,000	99,000	99.55%
	18,150,000	18,150,000	0	100.00%
	248,000,000	243,160,000	4,840,000	98.05%
	43,550,000	42,072,600	1,477,400	96.61%
	12,750,000	12,730,000	20,000	99.84%
	9,200,000	9,200,000	0	100.00%
	7,350,000	7,343,500	6,500	99.91%
	16,950,000	16,945,000	5,000	99.97%
	16,739,000	16,724,800	14,200	99.92%
	15,450,000	15,440,800	9,200	99.94%
	124,800,000	122,530,000	2,270,000	98.18%
	41,750,000	40,322,900	1,427,100	96.58%
	12,300,000	12,300,000	0	100.00%
	9,650,000	9,650,000	0	100.00%
	7,350,000	7,350,000	0	100.00%
	17,970,000	17,970,000	0	100.00%
	17,854,000	17,720,000	134,000	99.25%
	15,550,000	15,550,000	0	100.00%
	92,400,000	91,460,000	940,000	98.98%
	1,964,114,000	1,875,364,740	88,749,260	95.48%

7. ()

3. 가. 가

1,850

()

()

가

가



8. - ()

1. , ,
 2. 가 . * 가 () 가 ,

, 가 , , 가 ,

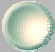
() * 가 가
 Sample



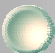
(Sample)

2004 5				
6 5	(, ,) ()	45,000	45,000	
6/5 Y			54,000	99,000
6/6 Y	(3) -		100,000	199,000
6/7 N				
			: 54,000	: 45,000


9. ()


 [Empty box for text input]


	291,998		219,870	75.30%
	74,493		71,357	95.79%
	224,400	550,000 X34 X12	220,339	98.19%
	190,400	70,000 X34 X80	182,140	95.66%


 [Empty box for text input]

75.3% , 95.8%
 ,
 ,
 가 .


 가 .




 ()
 [Empty box for text input]

10. (,) .

2000 가 , , , Computer Set, Printer
 2003 1,318 , 가
) 가 , 2003 6 (, , 2003
 1 .

	2003	2003	2003	2004 ()			2005 (Plan)	
	147	-	93,808	126	-	167,904	89	-
	49	242,343	17,216	1	930	4,109	-	-
()	1,290	1,859,937	276,534	167	207,696	296,586	84	77,600
()	27	54,500	24,620	61	184,550	44,635	31	69,900
()	1	18,500	2,775	3	37,466	2,349	-	-
	1,318	1,932,937	303,929	231	429,712	343,570	115	147,500
	134	46,403	-	1	983	-	2	600
	197	245,356	37,501	2	2,000	53,921	30	21,600
LCD	4	27,271	-	1	2,769	-	-	-
PC Set	3,683	3,473,822	60,332	761	1,241,267	39,913	657	758,310

○

2003 1 0.7 가 3 가 , 가 19 , 가 . .

, , , .

○

가 가 , 가 .

가 , 가 .

가 .

11. Package

S/W	52	Package가	, 15
Package가	Package S/W	H/W	()

Back - Up, Authority	H/W	S/W	System	Program	upgrade	S/W	가	가
----------------------	-----	-----	--------	---------	---------	-----	---	---

S/W	(Program , , Upgrade)	H/W	(Back - Up, Upgrade, Maintenance)
Upgrade	User - Coordinator(Request	52	Trouble Request, S/W
(, ,)	(,)가	ID	On-line

13.

<p>- 2002</p> <p>-</p>	<p>가</p> <p>가 가</p> <p>가</p>	<p>가</p> <p>,</p> <p>가</p>
<p>,</p> <p>,</p> <p>,</p> <p>,</p>	<p>,</p> <p>가 ,</p> <p>가</p> <p>()</p> <p>base 가 가 ,</p> <p>가</p> <p>Data</p>	<p>System</p> <p>()</p> <p>,</p> <p>System</p> <p>Check(</p>

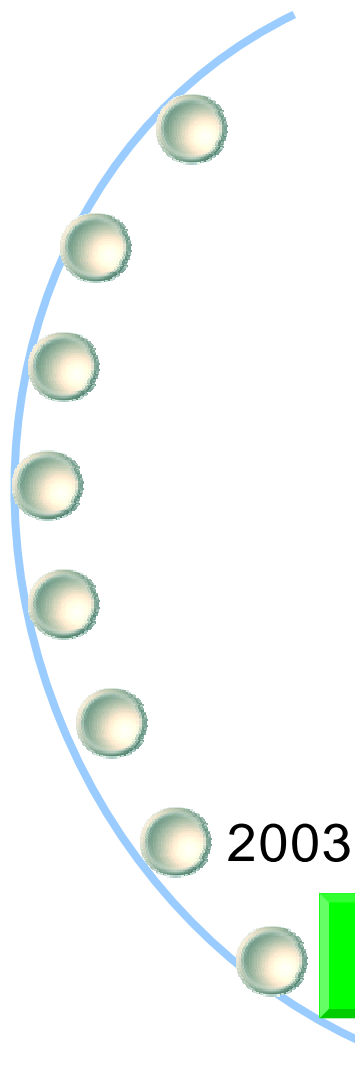
(TIX)	1	2	(TIX)		(TIX)
	先		先	가	가
가	가		가	가	가
2003	48,000	8	가	가	가
	가				

2002 Package .	. . 가 가 .	가 , , , .

14. ()

가 , 5 2,000 1 20 가 System ID 가 가

System () 가 (System 가)



2002

1. ()

1 2
12

가 가 가

가

2004.2.27 가
2004.4.30
2004.5.27 50 가

()



2.

2002

2002 2003

5%

가

가

가

2002

- 2002 1,280

(38,400 , 5 37,120)

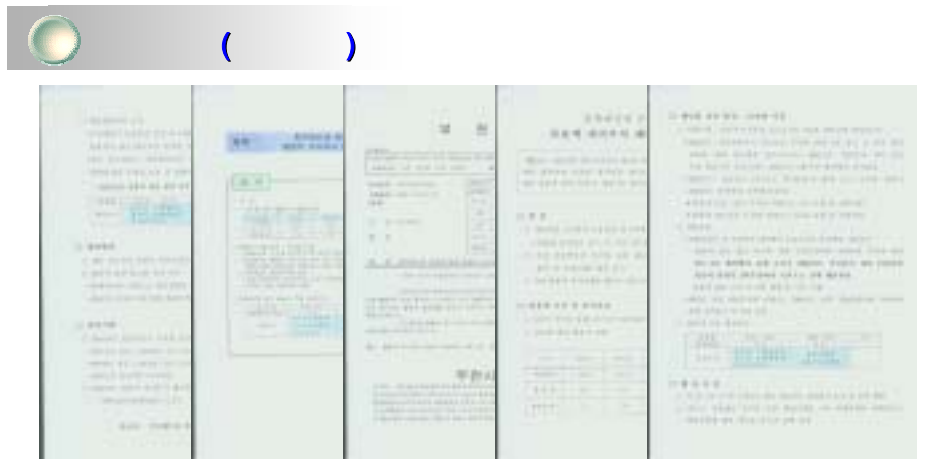
- 2003 7,240

(129,600 , 2 122,360)

- 2004 7,240

2002

: 13310-2836(2003.11.25), “ ”



3.

2002

2002 2 5 , () 6 .

가 가 .

가 가 .

가 “ ” .

9 , ,

- 9 (12) : 2003.12


- (54) : 2004. 3. 24 가

가 : 47 , 16

- 가 가

- 가 가

()




4.

2
가 ,
가 ,
가

(: , ,)
가 가 가
: (10)

2
가 .

()



5.

20 ~30
가

3

()



7. ()

2002

2002 7,320,240,055
3,815,920

73

2002

6

()



8. ()

100 가

4-8

가 가

()

가

9. ()

: 283,138 (137,551, 145,587)
 2003 : 333,415
 : 10 (1, 5, 4)
 : 6
 : 240,000
 - 5 1 2 (.
 1) .
 - 91,295
 - : 358,762 : 72

: 240,000 - : 2004. 4. 30
 :
 : 169-130
 (2003)
 - : 127,132
 - : 501,280
 - : 72
 2002 가 35,837 가
 ()
 : 9 : 1 (3)
 : ()
 04 () ('05)
 - ,
 가

- 4 가
8 가 (, 234,000)
- , 가 가
- 가 .

